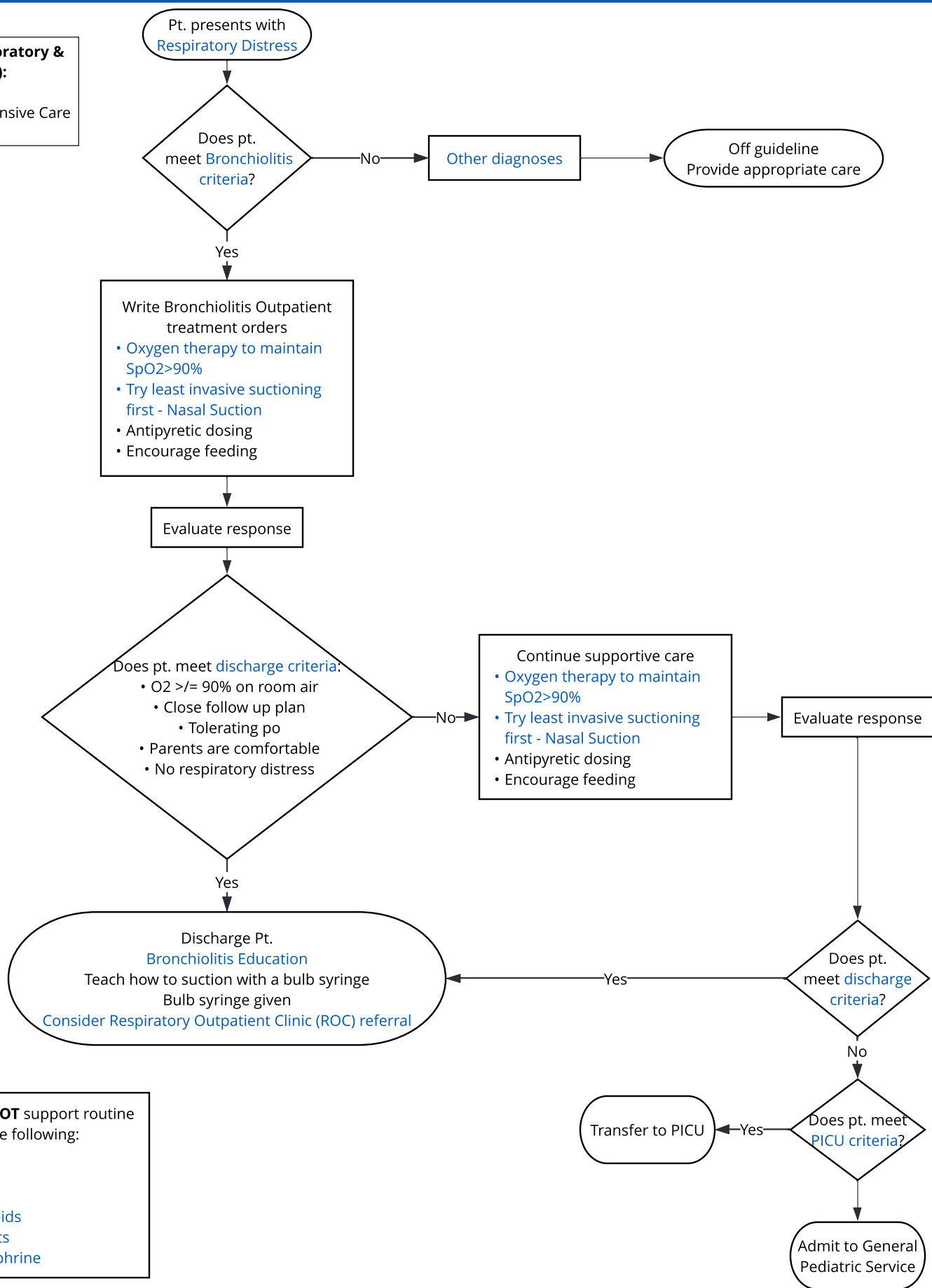


**Abbreviations (laboratory & radiology excluded):**  
 pt. = patient  
 PICU = Pediatric Intensive Care Unit



Evidence does **NOT** support routine use of the following:

- Albuterol
- Antibiotics
- Chest X-rays
- Glucocorticosteroids
- Laboratory Tests
- Racemic Epinephrine