

Pediatric Pt with Suspected Stroke external to Children's Mercy Adele Hall (AH) campus:

- Non-CMH institutions:**
 - Call 1-800-GOMERCY
- CM Offsite locations:**
 - Call Transfer Center: 1-800-GOMERCY or x51529
 - Identify you are caring for a "suspected stroke" patient
 - Transfer to CM AH campus

[Suspected Stroke Alert Activation Process Adele Hall Campus](#)

- [KU Transfer for Stroke](#)
- [Contraindications for tPA](#)
- [tPA Administration and Monitoring Guidelines](#)

Stroke Screening Evaluation

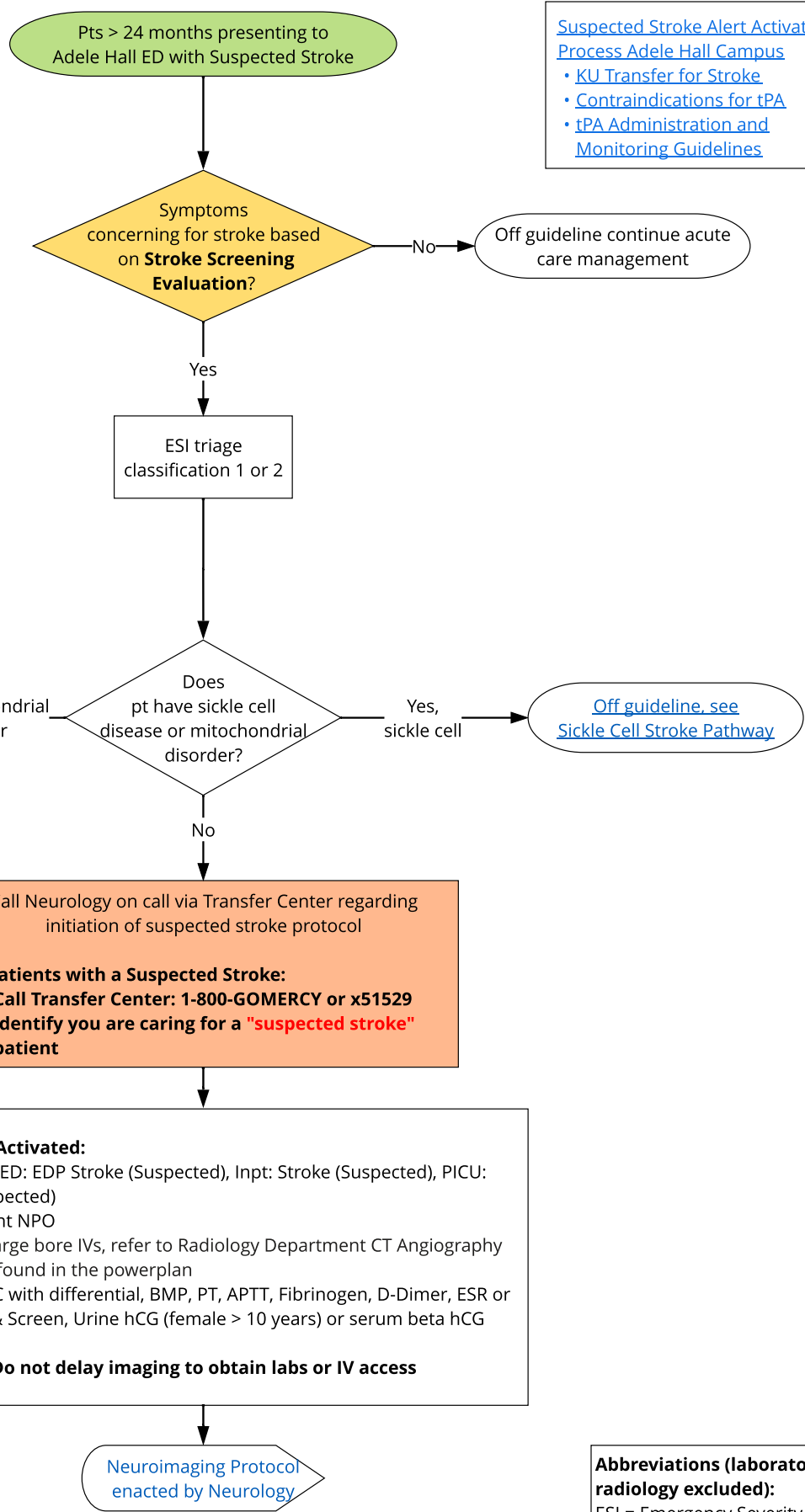
I. Is there a focal neurological deficit?

- Unilateral weakness or sensory change
- Vision loss or double vision
- Speech difficulty
- Dizziness or trouble walking

II. Did the problem begin or get worse suddenly?

III. [Has the problem been present for less than 24 hours?](#)
 (When was the child last seen well?)

If Yes to ALL three of the questions above, patient symptoms are concerning for stroke.



Abbreviations (laboratory & radiology excluded):
 ESI = Emergency Severity Index