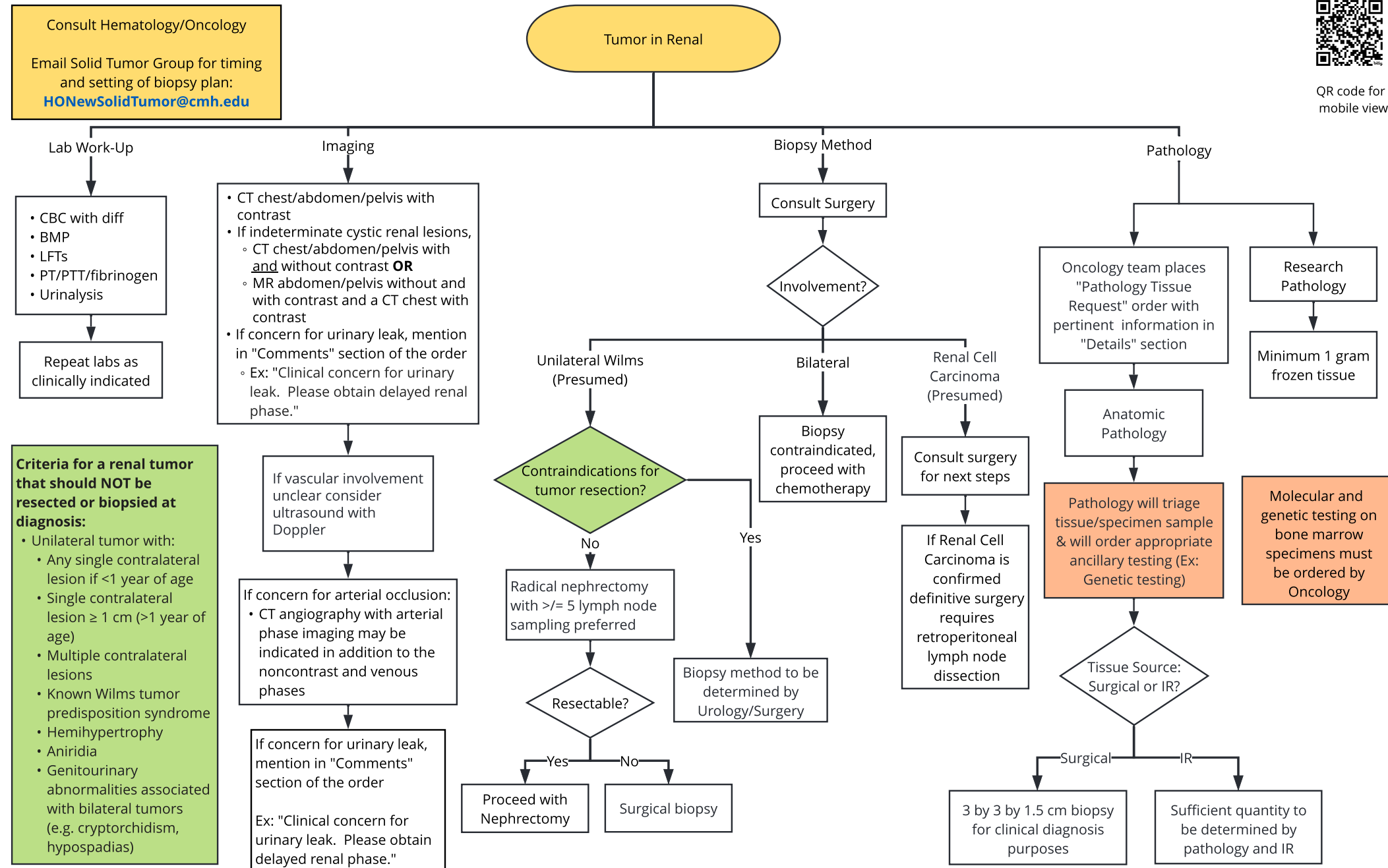




QR code for mobile view



**Criteria for a renal tumor that should NOT be resected or biopsied at diagnosis:**

- Unilateral tumor with:
  - Any single contralateral lesion if <1 year of age
  - Single contralateral lesion ≥ 1 cm (>1 year of age)
  - Multiple contralateral lesions
  - Known Wilms tumor predisposition syndrome
  - Hemihypertrophy
  - Aniridia
  - Genitourinary abnormalities associated with bilateral tumors (e.g. cryptorchidism, hypospadias)