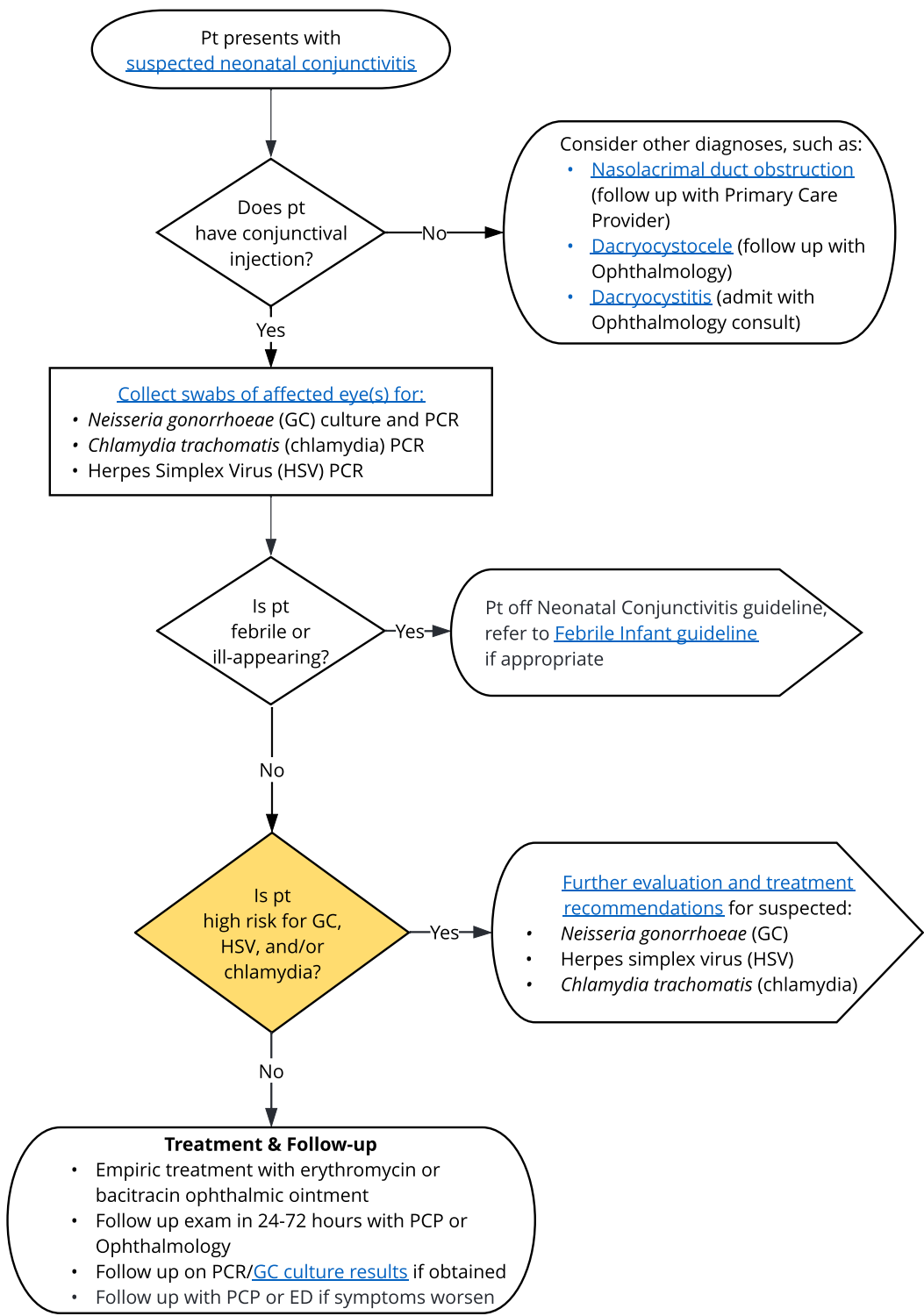


- Inclusion Criteria:**
- Pt is ≤ 28 days
 - Injected conjunctiva **and**
 - Mucopurulent discharge **or** hemorrhagic ocular discharge
- Exclusion Criteria:**
- Pt is febrile or ill-appearing (if appropriate refer to [Febrile Infant guideline](#))
 - Pt is ≥ 29 days of age

Risk Criteria for <i>Neisseria gonorrhoeae</i> (GC), <i>Chlamydia trachomatis</i> (chlamydia) or herpes simplex virus (HSV) infections	
Risk factor	Suspected pathogen
Maternal history of untreated GC	GC
Baby born without recommended topical eye prophylaxis for GC	
Remarkable amounts of eye discharge	
Vesicular skin lesions	HSV
History of maternal HSV lesions at delivery, especially if known to be primary infection	
Maternal history of untreated chlamydia	Chlamydia
Hemorrhagic conjunctivae	
If "Yes" to any of these risk criteria then patient should be considered high risk for GC, HSV, and/or chlamydia. Consider treatment for multiple pathogens when appropriate	



QR code for mobile view