



Inclusion Criteria

- Age 1 year to 25 years
- Inpatient, outpatient, observation

Exclusion Criteria

- Emergent or Critical: **MRI should not be delayed in critical situations**
- < 1 year of age
- Hospice care

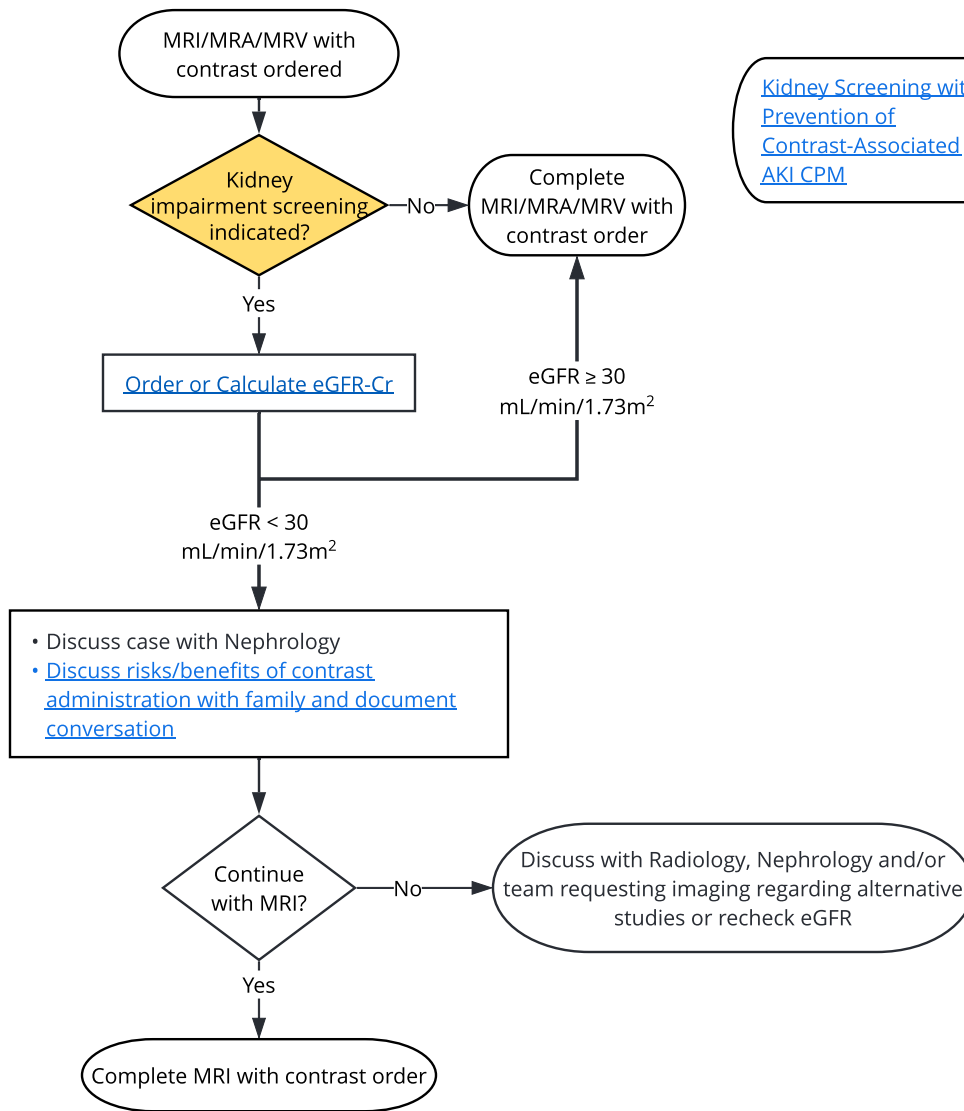
Screening indicated if:

- History of AKI or CKD
- History of kidney surgery or ablation
- [Patient at risk for acute kidney injury](#)

Abbreviations:

- **AKI** = Acute kidney injury
- **CA-AKI** = [Contrast-associated acute kidney injury](#)
- **PC-AKI** = Post-contrast acute kidney injury
- **eGFR** = Estimated Glomerular Filtration Rate
- **CKD** = Chronic Kidney Disease

[Kidney Screening with CT](#)
[Prevention of Contrast-Associated AKI CPM](#)



QR code for mobile

