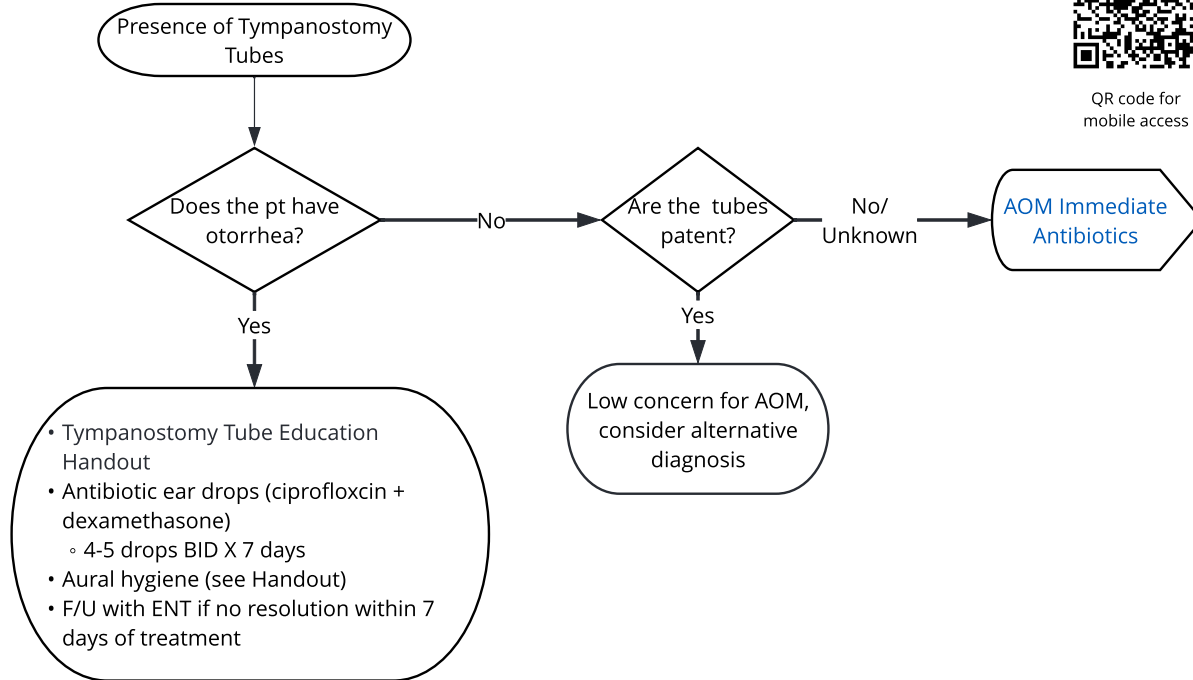




QR code for mobile access

Education Handouts:

- Otorrhea with Tubes
- Otorrhea with Tubes (Spanish)
- Otorrhea without tubes
- Otorrhea without tube (Spanish)



Abbreviations/Acronyms (lab, radiology excluded):

pt = patient
ENT = Ears, Nose, and Throat
BID = Twice per day

Contact: EvidenceBasedPractice@cmh.edu

[Link to synopsis and references](#)

Last Updated: 10.2022