



QR code for mobile access



Exclusion Criteria:

- Less than 60 days of age with fever (Febrile Infant CPG)

Special Considerations:

- Anatomic abnormalities (including cleft palate)
- Genetic conditions with craniofacial abnormalities (such as Down Syndrome)
- Presence of cochlear implants
- Immune deficiencies

Criteria for diagnosis of AOM:
Middle ear effusion **PLUS one** of the following:

- Moderate/severe bulging of TM (image)
- Mild bulging of TM and 48 hours of otalgia
- Mild bulging of TM (image) and intense erythema of the TM
- New onset otorrhea **NOT** caused by otitis externa

Non-Severe Symptoms:

- Mild otalgia <48 hours **AND**
- Temperature < 39°C (102.2°F)

Severe Symptoms:

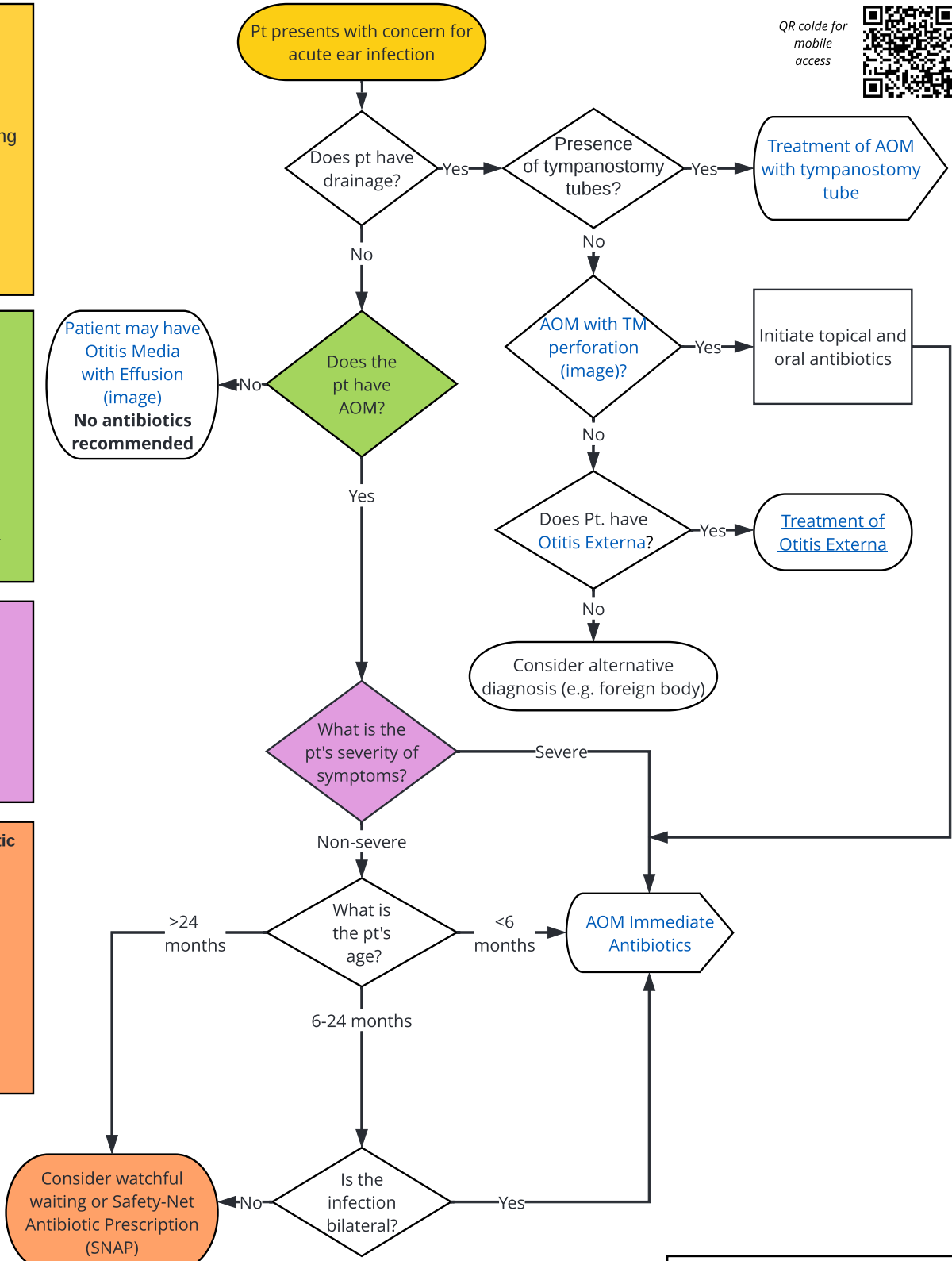
- TM perforation
- Moderate/severe otalgia **OR**
- Otalgia ≥ 48 hours **OR**
- Temperature ≥ 39°C (102.2°F)

Watchful waiting / Safety-Net Antibiotic Prescription (SNAP):

- Joint decision between provider and caregiver
- Emphasize appropriate pain control
- Must have close follow-up (within 48-72 hours) if SNAP not given
- Must be able to fill prescription if signs/symptoms worsen or fail to improve in 48-72 hours

Education Handouts:

- Otorrhea with Tubes
- Otorrhea with Tubes (Spanish)
- Otorrhea without tubes
- Otorrhea without tube (Spanish)
- Watchful Waiting
- Watchful Waiting (Spanish)
- SNAP Flyer for Providers
- SNAP Visual Aid



Abbreviations/Acronyms (lab, radiology excluded):

- pt = patient
- AOM = Acute Otitis Media
- TM = Tympanic membrane