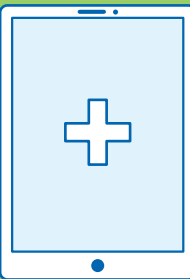


Important Contacts

Provider Portal: childrensmercy.org/providers

Children's Mercy Adele Hall Campus Operator	(816) 234-3000	24/7
Contact Center (Centralized Scheduling)	(816) 234-3700 or (800) 800-7300 (816) 855-1776 Fax	7:30 a.m. to 8 p.m., M-F 8 a.m. to 4:30 p.m., Sat.
Health Information Management (Medical Records)	(816) 234-3455 (816) 701-4034 Fax ROI@cmh.edu	8 a.m. to 5 p.m., M-F
Home Care	(816) 701-4300 MO (913) 696-5040 KS	8 a.m. to 5 p.m., M-F
My Patient Connections	Provider Help/Training and New Account Setup: mpc@cmh.edu	7 a.m. to 7 p.m. Daily
Patient Advocate	(816) 234-3119 patientadvocate@cmh.edu	8 a.m. to 4:30 p.m., M-F
Patient Financial Services	choosechildrensmercy.org (816) 701-5100 pfscsr@cmh.edu	8 a.m. to 4:30 p.m., M-F (closed Noon to 1 p.m.)



Telemedicine

Children's Mercy has more than 500 pediatric specialists providing telemedicine services, including facilitated appointments at our regional centers (St. Joseph, Joplin, Wichita, Junction City), as well as direct to patient services. Due to advancements in technology, a Children's Mercy provider can be virtually anywhere delivering the same high-quality care that is the Children's Mercy standard. There are times when patients and doctors still need in-person visits. Children's Mercy providers will guide your referred patients on when a telemedicine visit is appropriate.

To Refer for Appointments

- Visit childrensmercy.org/providers.
 - » Select **Refer a patient**
 - » Select **Request a clinic appointment**.
 - » Select a specialty.
 - » Select Reasons for Consultation and then click Next.
 - » To request additional appointments, after clicking Next, go back to Specialty and follow the same process.
- The Children's Mercy Contact Center will call the patient within 48 hours to schedule.
- For assistance with scheduling, call the Contact Center at **(816) 234-3700** or **(800) 800-7300**.

Referral Tips

- Families can call **(816) 234-3700** or **(800) 800-7300** to follow up on appointment scheduling after three days of the initial request.
- To see all past, future, rescheduled, no showed and cancelled appointments on a patient, you may find them in your patient's chart within My Patient Connections.
- To request multiple appointments on the same day, parents or their PCP office staff can complete the Coordinating Multiple Appointments form. To fill out the form, visit cmkc.link/MultipleAppt.

Children's Mercy Greater Kansas City Locations

Children's Mercy Adele Hall Campus 2401 Gillham Road Kansas City, MO 64108 (816) 234-3000	Children's Mercy Broadway 3101 Broadway Kansas City, MO 64111 (816) 234-3000	Children's Mercy East 20300 East Valley View Parkway Independence, MO 64057 (816) 478-5200	Children's Mercy Northland 501 NW Barry Road Kansas City, MO 64155 (816) 413-2500
Children's Mercy Hospital Kansas 5808 West 110th Overland Park, KS 66211 (913) 696-8000	Children's Mercy College Boulevard 5520 College Blvd. Overland Park, KS 66211 (913) 696-8000	Children's Mercy Blue Valley 6750 West 135th Street Overland Park, KS 66223 (913) 717-4700	Children's Mercy At The University of Kansas Health System 2000 Olathe Boulevard, Level 3 Kansas City, KS 66160 (913) 264-0050
Children's Mercy Sports Medicine Center at Village West 1801 N. 98th St. Kansas City, KS 66111 (913) 264-3000			

Medical Staff Leadership

Robert H. Lane, MD, MS Executive Vice President/Physician-in-Chief; Schellhorn Family Endowed Chair in Medical Administration	Shawn St. Peter, MD Surgeon-in-Chief; Program Director, Pediatric Surgery Fellowship and Surgical Scholars Program; Professor of Surgery, University of Missouri-Kansas City School of Medicine
Douglas Blowey, MD Medical Director, Children's Mercy Hospital Kansas, Integrated Care Solutions, Physician Services; Associate Professor of Pediatrics and Pharmacology, University of Missouri-Kansas City School of Medicine	Jeanne James, MD, MBA, FAAP Senior Vice President and Pediatrician-In-Chief; Professor of Pediatrics, Chair, Department of Pediatrics, Children's Mercy Kansas City, University of Kansas City of Medicine, University of Missouri-Kansas City School of Medicine

Provider Portal: childrensmercy.org/providers



2401 Gillham Road | Kansas City, MO 64108 | (816) 234-3000 | (800) GO MERCY

Copyright © 2024 The Children's Mercy Hospital. All rights reserved. EEO Employer/Disabled/VET

24-PSERV-2331 02/24

REFERENCE GUIDE



Request a Clinic Visit

- Visit childrensmercy.org/providers and select a specialty.
- For assistance with referrals, call the Contact Center at **(816) 234-3700** or **(800) 800-7300** 7:30 a.m. to 7 p.m., M-F 8 a.m. to 4:30 p.m., Sat.

Transports, Admissions, Urgent Consults

- Call **(800) GO MERCY** or **(800) 466-3729**
- Subspecialist phone consultation available 24/7.
 - To request an online non-urgent consult, go to childrensmercy.org and click on **Request a Consult**.

Emergency Departments

Location	Phone	Fax
Adele Hall	(816) 234-3430	(816) 234-3421
CMH Kansas	(913) 696-8274	(913) 264-9972

Urgent Care Centers

Location	Phone	Fax
Blue Valley	(913) 717-4702	(913) 717-4791
East	(816) 478-5244	(816) 478-5294
Northland	(816) 413-2526	(816) 413-2650

New Urgent Care Hours: 10 a.m. to 8 p.m. seven days per week.
childrensmercy.org/urgent-care

Imaging Services

Location	Phone	Centralized Scheduling	Centralized Fax
Adele Hall	(816) 234-3270	(816) 234-3272	(816) 802-1422
CMH Kansas	(913) 696-8180		
Broadway	(816) 960-8450		
East	(816) 478-5227		
Northland	(816) 413-2518		

Outpatient Laboratory

Location	Phone	M - F hours	Weekend hours
Adele Hall	(816) 234-1530	7 a.m. – 5 p.m.	Call (816) 234-3700 to schedule
CMH Kansas	(913) 696-8210	7 a.m. – 5 p.m.	9 a.m. – 1 p.m.
Broadway	(816) 960-8460	8 a.m. – 5 p.m.	Closed
East	(816) 478-5211	8 a.m. – 5 p.m.	10 a.m. – 6 p.m.
Northland	(816) 413-2520	8 a.m. – 5 p.m.	10 a.m. – 6 p.m.

Provider Relations Team



Michelle McMillan
 Provider Relations Assistant Director
 Cell: (816) 260-1997
mmcmillan@cmh.edu



Dana McNiel, RN
 Provider Relations Territory Manager
 Cell: (913) 575-0928
dsmcniel@cmh.edu



Mica Wiemann, MBA
 Provider Relations Territory Manager
 Cell: (816) 225-1517
mwiemann@cmh.edu

Team email:
physicianservices@cmh.edu

Specialty	Location	Missouri				Kansas				
		Adele Hall (KCMO)	Broadway	Northland	East	CMH Kansas	College Blvd	Blue Valley	Village West	University of Kansas Health System
Adolescent Medicine										
Adolescent Specialty Clinic	(816) 960-4152		✓	✓		✓				
Complex Syncope Clinic	(816) 960-4152		✓							
Eating Disorders	(913) 696-5070					✓				
Nutrition					✓					
Allergy and Immunology										
Allergy, Asthma, Immunology	(816) 960-8900		✓	✓	✓	✓				
Advanced Asthma Interdisciplinary Respiratory (AAIR) Clinic	(816) 983-6490	✓								
Asthma Education	(816) 302-3484									
Healthy Home/Environmental Health Program	(816) 302-8565	✓								
Immunology Clinic	(816) 960-8900		✓							
Multidisciplinary Food Allergy Clinic	(816) 960-8900					✓				
Beacon Program	(816) 960-8040		✓							
Burn										
Burn Clinic	(816) 234-3520	✓								
Cardiology (Heart Center)										
Cardiac Connective Tissue Disease Clinic	(816) 234-3880	✓								
Cardiac Neurodevelopmental Clinic	(816) 234-3880	✓					✓			
Cardiology	(888) 555-3880/(816) 234-3880	✓		✓	✓		✓			✓
CHAMP Clinic	(816) 234-3880	✓								
Echocardiograms	(816) 302-3699	✓		✓	✓		✓			✓
Electrocardiograms	(816) 234-3247, #2	✓		✓	✓		✓			✓
Electrophysiology	(816) 234-3880	✓			✓		✓			✓
Exercise Stress Testing	(816) 234-9416	✓					✓			
Fetal Cardiology	(816) 234-3209	✓								
Heart Failure/Heart Transplant Clinic	(816) 302-8045	✓								
Preventive Cardiology	(816) 302-3670	✓					✓			
Pulmonary Hypertension Clinic	(816) 302-3672	✓								
Single Ventricle Clinic	(816) 302-3670	✓								
Cardiovascular Surgery	(816) 234-3580	✓								
Child Adversity and Resilience (SCAN)	(816) 234-3424	✓					✓			
Foundations for Foster Care Clinic	(816) 302-8193	✓								
Clinical Pharmacology, Toxicology and Environmental Health	(816) 234-3059	✓								
Healthy Home/Environmental Health Program	(816) 302-8565	in home visits								
GOLDILOKs Clinic	(816) 234-3059	✓								
Dental	(816) 234-3257	✓								
Dermatology	(816) 960-4100									
General Dermatology			✓	✓	✓	✓				
Excision Clinic			✓							
Genetic Skin Disorder Clinic			✓							
Laser Clinic			✓			✓				
Melanoma Clinic			✓							
Phototherapy Service			✓							
Vascular Anomalies Specialty Clinic			✓							
Developmental and Behavioral Health										
ADHD Specialty Clinic	(913) 965-5740	✓		✓			✓			
Autism Clinic	(816) 234-3674	✓		✓	✓		✓			
Depression and Anxiety in Youth Clinic	(816) 234-3674	✓					✓			
Developmental and Behavioral Health	(816) 234-3674	✓		✓			✓			
Eating Disorders	(913) 696-5070						✓			
Tourette Syndrome Center	(816) 234-3149			✓						
Down Syndrome	(816) 960-2856	✓					✓			
ENT	(816) 234-3040, #2	✓			✓	✓				
Pediatric Tracheostomy Clinic	(816) 234-3040, #5	✓								
Emergency Medicine	Adele (816)-234-3430 Kansas (913) 696-8274	✓				✓				
Endocrinology and Diabetes										
Endocrinology	Adele (816) 960-8803 North (816) 960-8803 Broadway (816) 960-8803 East (816) 478-5200 College (913) 696-8000		✓	✓	✓		✓			✓
22Q11.2 Deletion Syndrome Clinic/Super Q Express	(816) 960-8828/8829	✓				✓				
Childhood Diabetes Center	(816) 960-8803		✓	✓	✓		✓			✓
Endocrine Disorders in Cancer Survivors	(816) 960-8803		✓	✓			✓			
Gender Pathway Services	(913) 696-5880					✓	✓			
Growth Hormone	(816) 960-8803		✓	✓	✓		✓			✓
GUIDE Clinic	(816) 234-3395	✓								
Polycystic Ovary Syndrome Clinic	(816) 960-8803		✓							
Prader Willi Syndrome Clinic	(816) 960-8803		✓							
Thyroid Nodule and Carcinoma Clinic	(816) 960-8803		✓	✓						
Turner Syndrome	(816) 960-8803		✓							
Type 2 Diabetes Prevention Clinic	(816) 960-8803		✓				✓			
Fetal Health										
Fetal Surgery and Intervention	(816) 855-1800	✓								
Fetal Cardiology	(816) 234-3209	✓								

Specialty	Location	Missouri				Kansas				
		Adele Hall (KCMO)	Broadway	Northland	East	CMH Kansas	College Blvd	Blue Valley	Village West	University of Kansas Health System
Perinatal Clinic	(816) 855-1800	✓								
Gastroenterology	(816) 234-3066	✓								✓
Abdominal Pain	(816) 234-3066	✓		✓	✓	✓				
Biofeedback Therapy	(816) 234-3066	✓								
BRICK	(816) 234-3066	✓		✓						
Celiac Disease	(816) 234-3066	✓								
Colorectal Center (Surgery Clinic)	(816) 234-3199	✓								
Eosinophilic Esophagitis (EoE) Clinic	(816) 234-3066	✓								✓
Feeding Clinic	(816) 234-3066	✓		✓						
Inflammatory Bowel Disease (IBD) Clinic	(816) 234-3066	✓		✓						
Liver Care Center	(816) 302-3410	✓								
Motility	(816) 234-3066	✓								
Polyposis Center	(816) 234-3066	✓								
General Surgery	(816) 234-3097	✓		✓						
Bariatric Surgery	(816) 234-3097	✓								
Burn Specialty Team	(816) 234-3520	✓								
Comprehensive Colorectal Center	(816) 234-3441	✓								
Pectus Center	(913) 696-2985	✓								
Genetics										
Ehlers Danlos Syndrome Clinic	(816) 983-6960	✓								
Genetics and Dysmorphology Clinic	(816) 234-3771	✓					✓			
Gynecology										
Pediatric Adolescent Gynecology	(816) 234-3840	✓					✓			
Endometriosis	(816) 234-3840	✓								
Hearing and Speech	(816) 960-4001	✓	✓	✓	✓			✓		
Hematology/Oncology/BMT	(816) 302-6808									
Hem/Onc		✓								
Adolescent and Young Adult (AYA)		✓								
Brain Tumor		✓								
Cardio-Oncology		✓								
Cellular Therapies		✓								
Coagulation and Thrombosis Consult Service		✓								
Comprehensive Stroke Clinic		✓								
Hemophilia		✓								
Histiocytosis		✓								
HOPE Clinic (Spanish)		✓								
Leukemia/Lymphoma		✓								
Liver Tumor		✓								
Sickle Cell		✓								
Soft Tissue and Bone Sarcoma		✓								
Stem Cell Transplant		✓								
Survive and Thrive		✓								
Young Women's Clinic		✓								
Infectious Diseases	(816) 983-6325									
International Adoption		✓								
International Travel Medicine Clinic		✓								
Special Immunology		✓								
Neonatology										
NICU	(816) 234-3300	✓								
Congenital Heart Disease Screening	(816) 234-3593	✓								
NEON Infant Care Clinic	(816) 234-3593	✓								
Neonatal Follow-up Clinic	(816) 234-3799	✓								
Nephrology/Kidney Center	(816) 234-3030/(800) 276-0985									
Dialysis	(816) 234-3100	✓		✓			✓			✓
Enuresis and Voiding Disorder Clinic	(816) 234-3030	✓								
Hypertension Clinic	(816) 234-3030	✓								
Nephrology Genomics Clinic	(816) 234-3030	✓								
Neurology	(816) 234-3490									
Angelman Clinic	(816) 302-8073	✓			✓	✓				✓
Comprehensive Headache Clinic	(816) 234-3700	✓								
Dravet Syndrome Clinic	(913) 696-8950	✓								
Epilepsy Center	(913) 696-8950	✓								
Headache Relief Clinics	(816) 234-3700	✓		✓	✓	✓				
Headache Treatment Center	(816) 302-1815	✓								
Kernicterus Center of Excellence	(816) 302-6310	✓								
Movement Disorders and Spasticity Clinic	(816) 302-6310	✓								
Neurology Rheumatology Clinic	(816) 234-1666, #3	✓								
Neurophysiology	(816) 234-3092	✓		✓			✓			
Stroke Center	(816) 234-3490	✓								
Tourette Syndrome	(816) 234-3149	✓		✓						

Specialty	Location	Missouri				Kansas				
		Adele Hall (KCMO)	Broadway	Northland	East	CMH Kansas	College Blvd	Blue Valley	Village West	University of Kansas Health System
Neurosurgery	(816) 983-6739	✓				✓				
Nutrition	(816) 234-3468		✓	✓						
Ophthalmology	(816) 960-									