

Pediatric Patient with Suspected Stroke external to Children's Mercy (CM) Adele Hall (AH) campus:

- Non-CMH institutions: Call 1-800-GOMERCY
- CM Offsite locations:
 - Call Transfer Center: 1-800-GOMERCY or x51529
 - Identify you are caring for a "suspected stroke" patient
 - Transfer to CM AH campus

Stroke Screening Evaluation

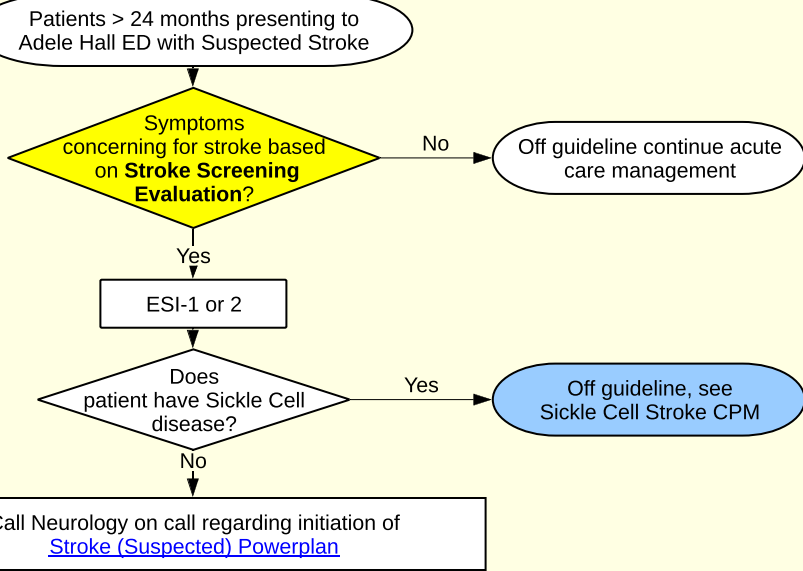
I. Is there a focal neurological deficit?

- Unilateral weakness or sensory change
- Vision loss or double vision
- Speech difficulty
- Dizziness or trouble walking

II. Did the problem begin or get worse suddenly?

III. Has the problem been present for less than 5 hours? (When was the child last seen well?)

If Yes to ALL three of the questions above, patient symptoms are concerning for stroke.



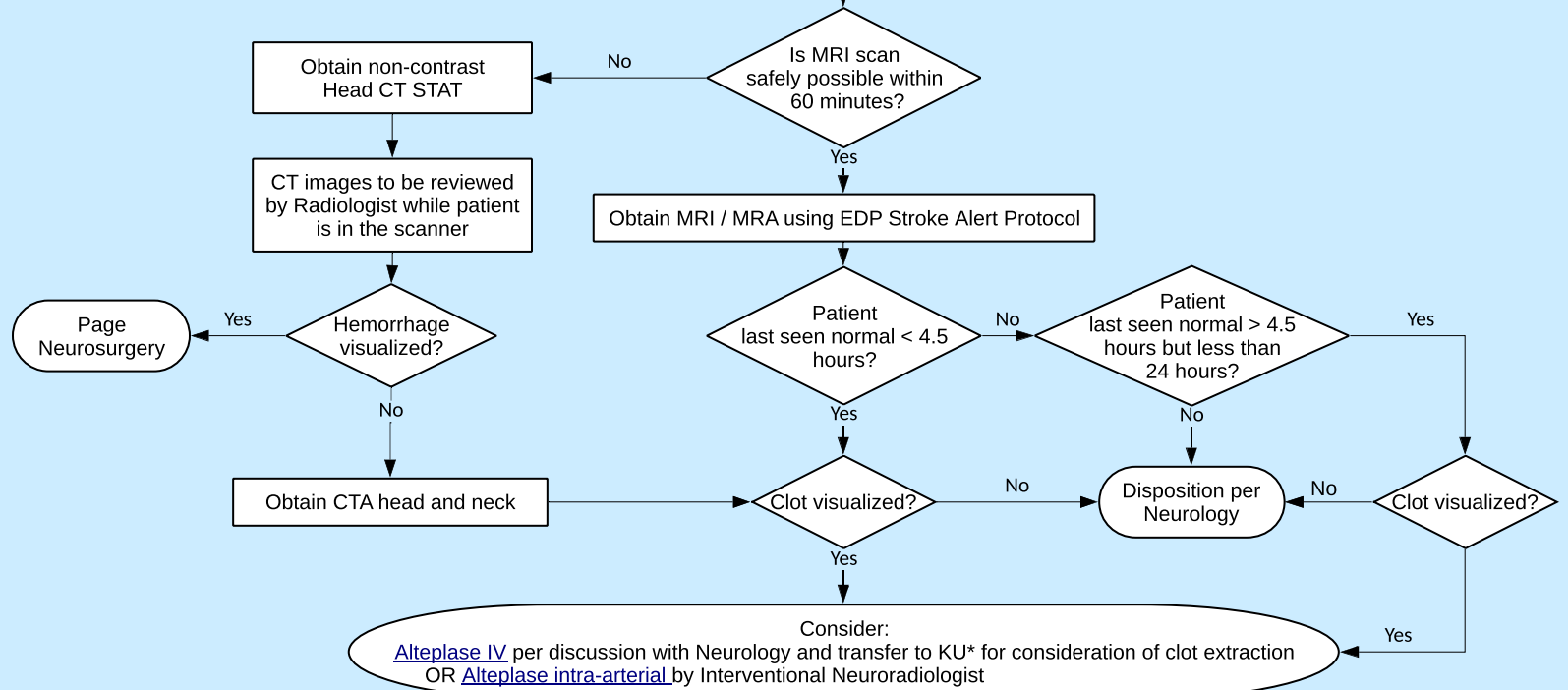
Process coding:

- Yellow: Stroke suspected by ER
- Grey: Stroke Alert Activated
- Blue: Neuroimaging Protocol enacted by Neurology

- Make patient NPO
 - Place two IVs (recommend at least one being a 22G in antecubital vein)
 - Obtain: CBCD, BMP, PT, APTT, Fibrinogen, D-Dimer, ESR or CRP, Type & Screen, Urine hCG (female > 10 years) or serum beta hCG
- Do not delay imaging to obtain labs or IV access**

For patients with a Suspected Stroke on a Med-Surg unit at CM AH campus:

- Call Transfer Center: 1-800-GOMERCY or x51529
- Identify you are caring for a "suspected stroke" patient



Algorithm final:11/14/17