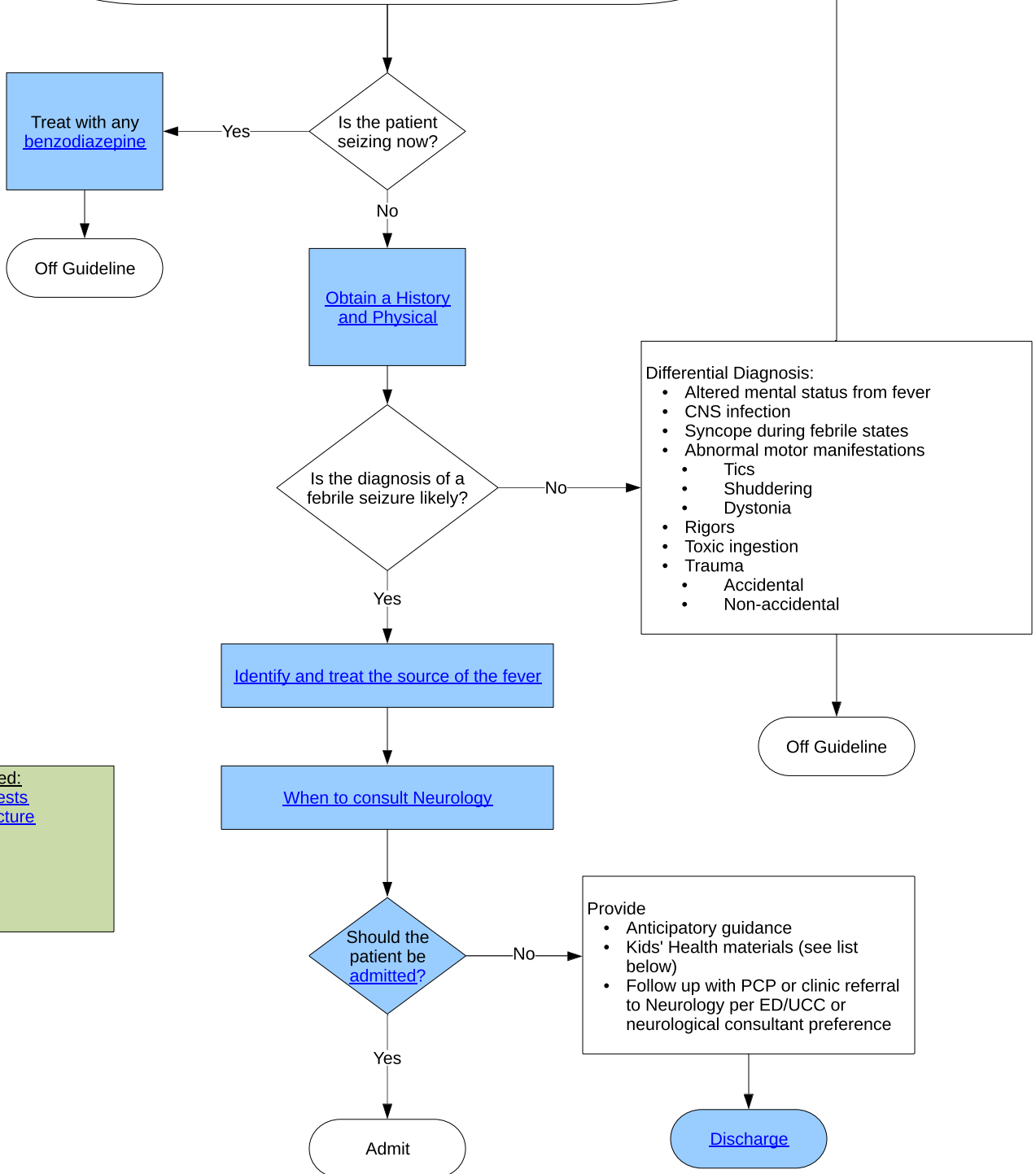


Evaluation of a Child Who Presents to the Emergency Department or Urgent Care Center After a Complex Febrile Seizure

A complex febrile seizure is a seizure that occurs in the presence of a fever that
(a) lasts > 15 minutes (prolonged) or
(b) only part of the body is affected (focal or partial) or
(c) two more seizures within a 24 hours period (recurrent)



NOT recommended:

- [Laboratory tests](#)
- [Lumbar puncture](#)
- [EEG](#)
- [CT Scan](#)
- [MRI](#)
- [Medications](#)