

**Inclusion criteria:**

- All patients diagnosed with spontaneous pneumothorax based on imaging findings
- Patients seen at or transferred to any CM location

**Exclusion criteria:**

- Prior spontaneous pneumothorax on the SAME side
  - Prior contralateral pneumothorax is NOT an exclusion criteria
- Tension pneumothorax
- Respiratory failure
- Secondary pneumothorax (traumatic, iatrogenic, asthma, etc.)

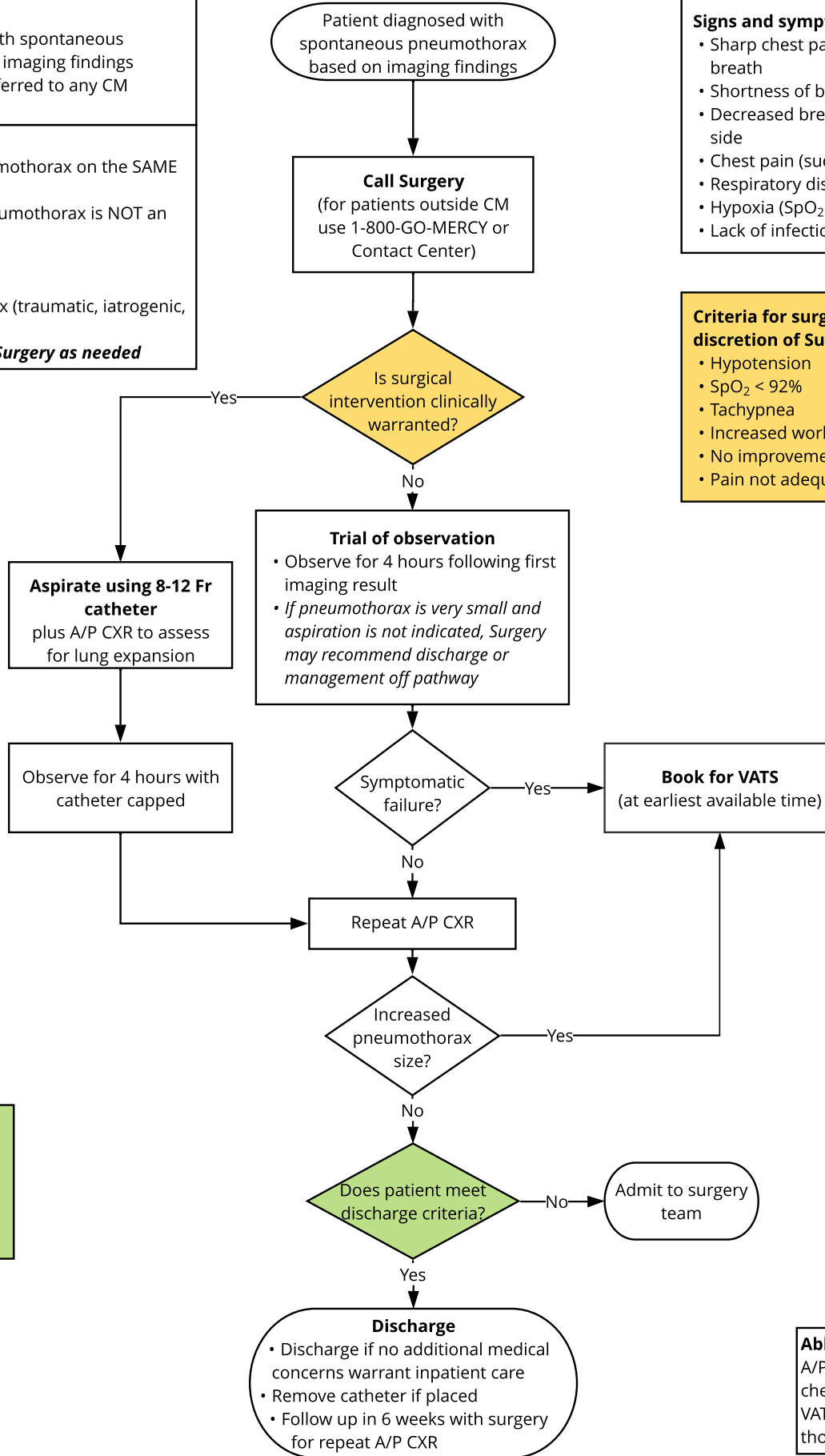
**Consult Pulmonology and Surgery as needed**

**Signs and symptoms:**

- Sharp chest pain made worse by a deep breath
- Shortness of breath
- Decreased breath sounds on the affected side
- Chest pain (sudden onset or insidious)
- Respiratory distress
- Hypoxia (SpO<sub>2</sub> < 92%)
- Lack of infectious symptoms

**Criteria for surgical intervention (at discretion of Surgery team):**

- Hypotension
- SpO<sub>2</sub> < 92%
- Tachypnea
- Increased work of breathing
- No improvement in pneumothorax size
- Pain not adequately controlled


**Discharge criteria:**

- Pneumothorax size smaller or stable
- Symptoms improved or stable
- Pain controlled



QR code for mobile view

**Abbreviations:**

A/P CXR= anterior/posterior chest X-ray  
 VATS= video-assisted thoracoscopic surgery