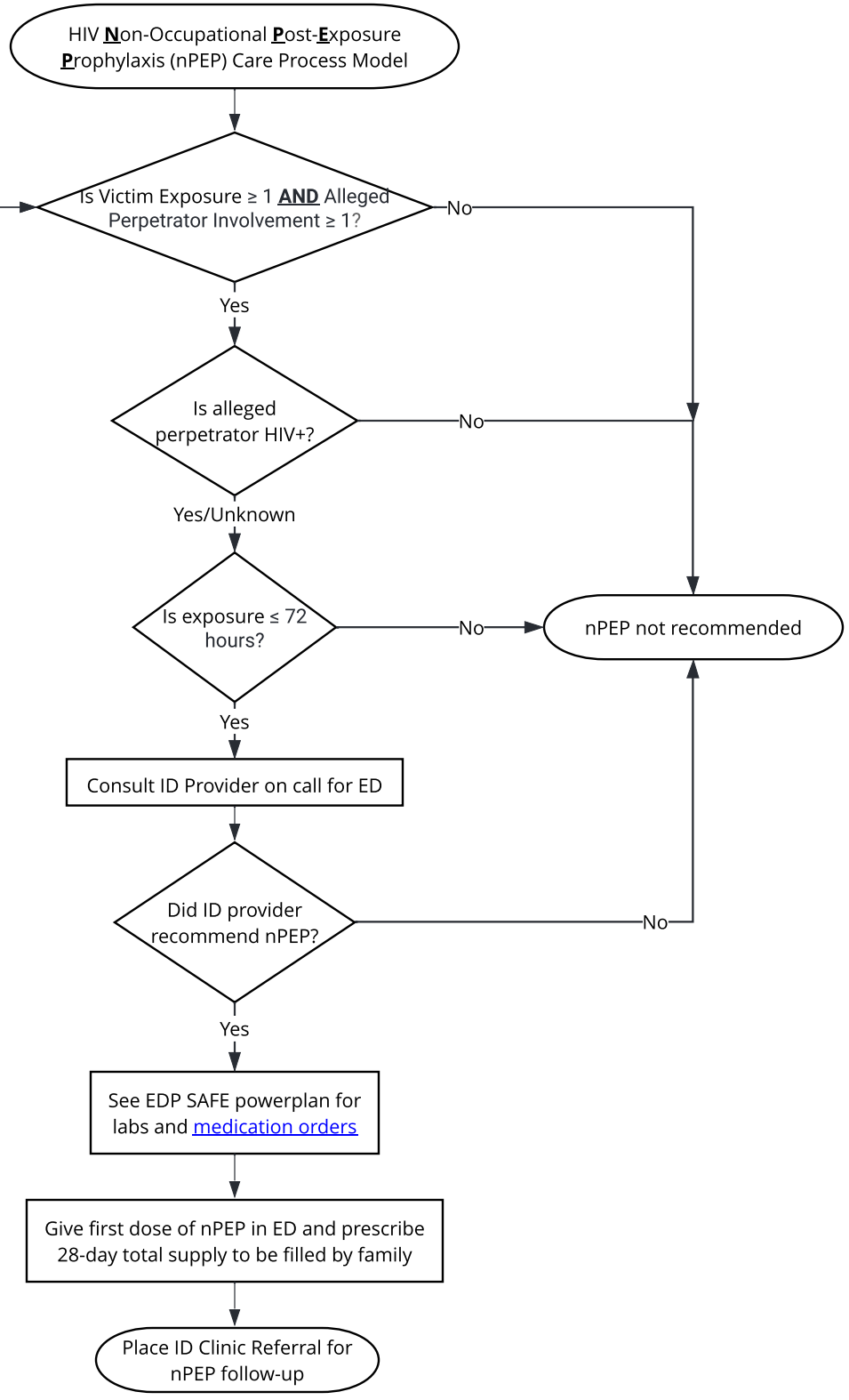


- Victim exposure (any):
- Vagina
 - Rectum
 - Penis
 - Eye
 - Mouth or other mucous membrane
 - Nonintact skin
 - Percutaneous contact
- Involving alleged perpetrator (any):
- Blood
 - Semen
 - Vaginal secretions
 - Rectal secretions
 - Breast milk
 - Any body fluid that is visibly contaminated with blood



CDC Guidelines for Antiretroviral Postexposure Prophylaxis After Sexual, Injection Drug Use, or Other Nonoccupational Exposure to HIV - United States, 2016