



QR code for mobile view

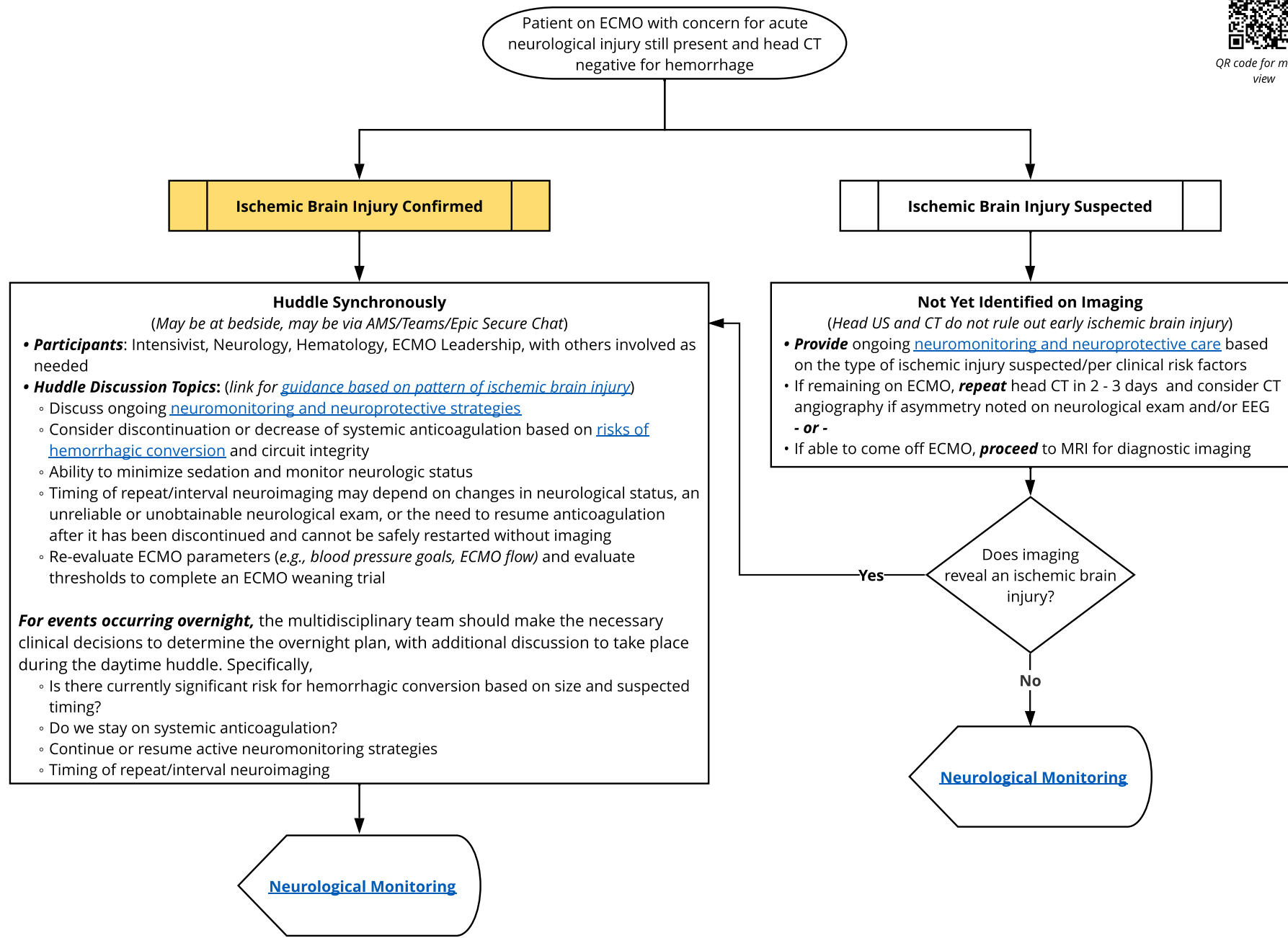
Exclusion criteria:

- Isolated intracranial hemorrhage on ECMO - **or** -
- Predominant hemorrhagic injury when combined with ischemic injury

For either scenario, refer to [Intracranial Hemorrhage on ECMO](#) algorithm

Note.

- Current evidence is insufficient to provide recommendations on the use of systemic tPA for acute arterial ischemic stroke in patients receiving systemic anticoagulation
- Endovascular therapy is not an option for pediatric patients following acute arterial ischemic stroke on ECMO in our regional system at this time



Abbreviations:
AMS = American Messaging Systems
ECMO = Extracorporeal membrane oxygenation
eCPR = Extracorporeal cardiopulmonary resuscitation