



QR code for mobile view

**Exclusion Criteria:**

- ≤ 60 days of age ([Refer to Febrile Infant Clinical Pathway](#))
- Concern for multisystem inflammatory syndrome (MIS-C) ([Reference MIS-C](#))

**COVID-19 Like Illness**

- Constellation of symptoms that may include: Cough, shortness of breath, difficulty breathing, loss of taste/smell, fever/chills, sore throat, runny nose/congestion

**OR**

- Fever in a child who cannot articulate another symptom (e.g., febrile infant or developmental delay)

**High Risk of Progressing to Severe Disease**  
 Regardless of COVID-19 immunization status

**ANY** of the following:

- Age < 1 year
- Prematurity in children < 2 years
- Immunosuppressed
- Obesity: BMI ≥ 30 kg/m<sup>2</sup> or > 95th percentile for age/weight
- Medical complexity with respiratory technology dependence
- Neurologic, genetic, metabolic, or other disability resulting in impaired airway clearance or limitations in self-care or activities of daily living
- Persistent asthma or chronic lung disease requiring > 2 inhaled or > 1 systemic medications daily
- Congenital or acquired cardiac disease
- Multiple moderate to severe chronic diseases
- Sickle cell disease
- Uncontrolled diabetes mellitus

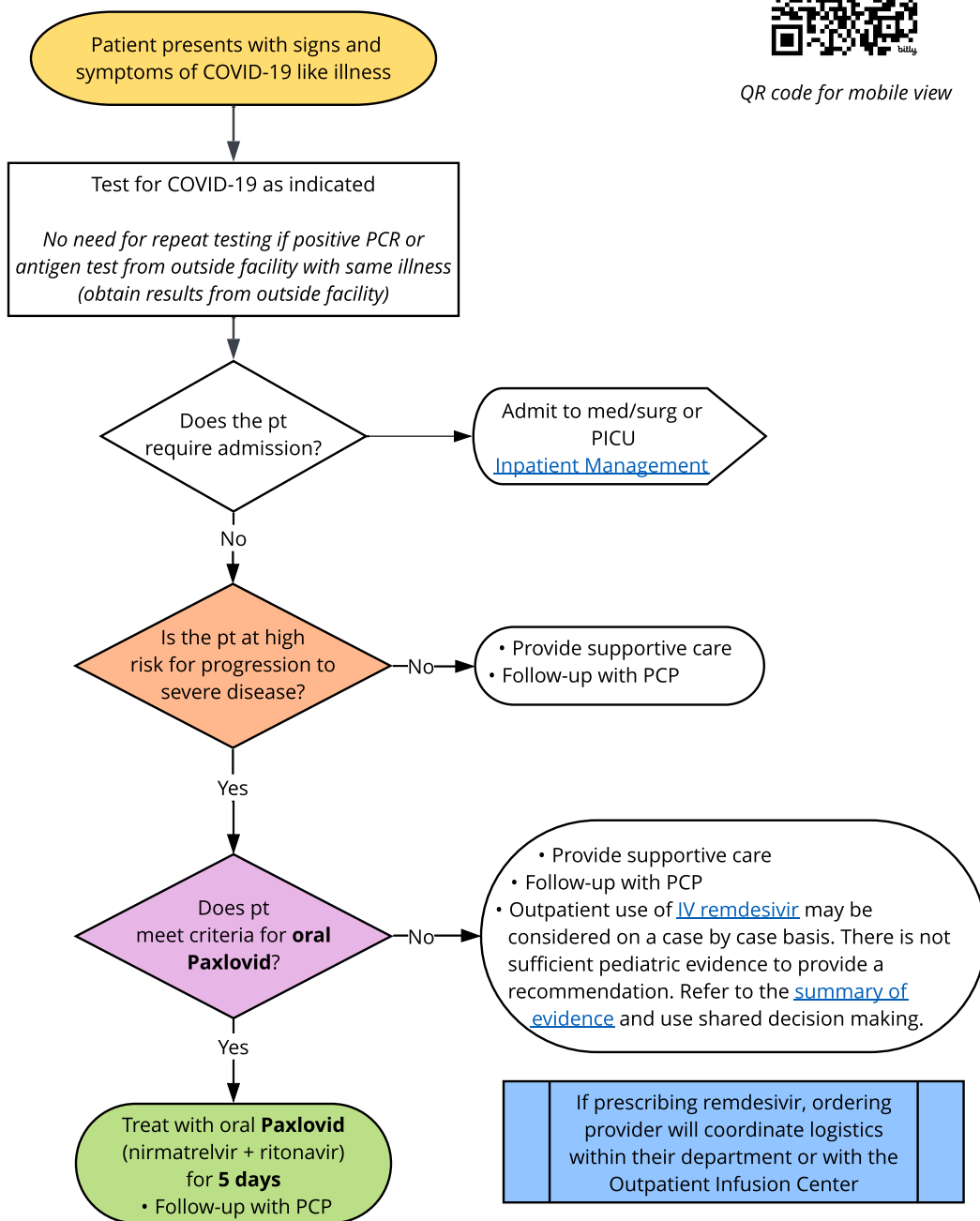
**Criteria for Oral Paxlovid (nirmatrelvir + ritonavir)**

Must meet **ALL** of the following:

- ≥ 12 years old AND ≥ 40 kg
- Able to take first dose within 5 days of symptom onset
- No known or suspected severe renal impairment (eGFR ≤ 30 mL/min)
- No significant drug-drug interactions with ritonavir ([Reference Drug Interactions](#))

**Paxlovid Dosing**

- Standard dose (eGFR ≥ 60 mL/min): nirmatrelvir 300 mg + ritonavir 100 mg PO BID for 5 days
- If eGFR 30 - 60 mL/min: nirmatrelvir 150 mg + ritonavir 100 mg PO BID for 5 days



If prescribing remdesivir, ordering provider will coordinate logistics within their department or with the Outpatient Infusion Center