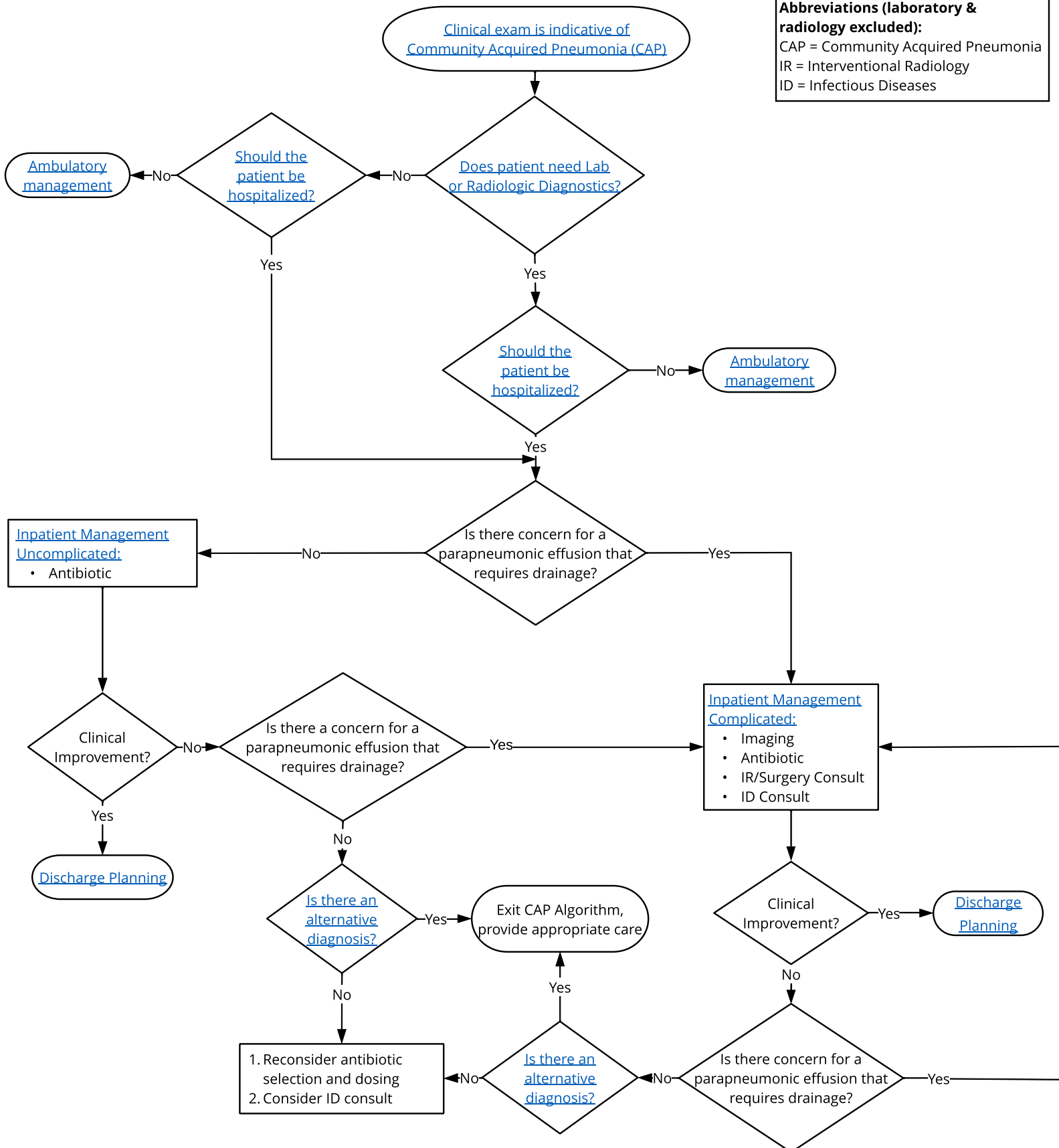




Abbreviations (laboratory & radiology excluded):
 CAP = Community Acquired Pneumonia
 IR = Interventional Radiology
 ID = Infectious Diseases



This care process model/clinical practice guideline is meant as a guide for the healthcare provider, does not establish a standard of care, and is not a substitute for medical judgment which should be applied based upon the individual circumstances and clinical condition of the patient.