

Legend

Abbreviations (laboratory & radiology excluded):
 pt. = patient
 KU = Kansas University Hospital

Path

Start/Stop

Decision/Branch

Process/Step

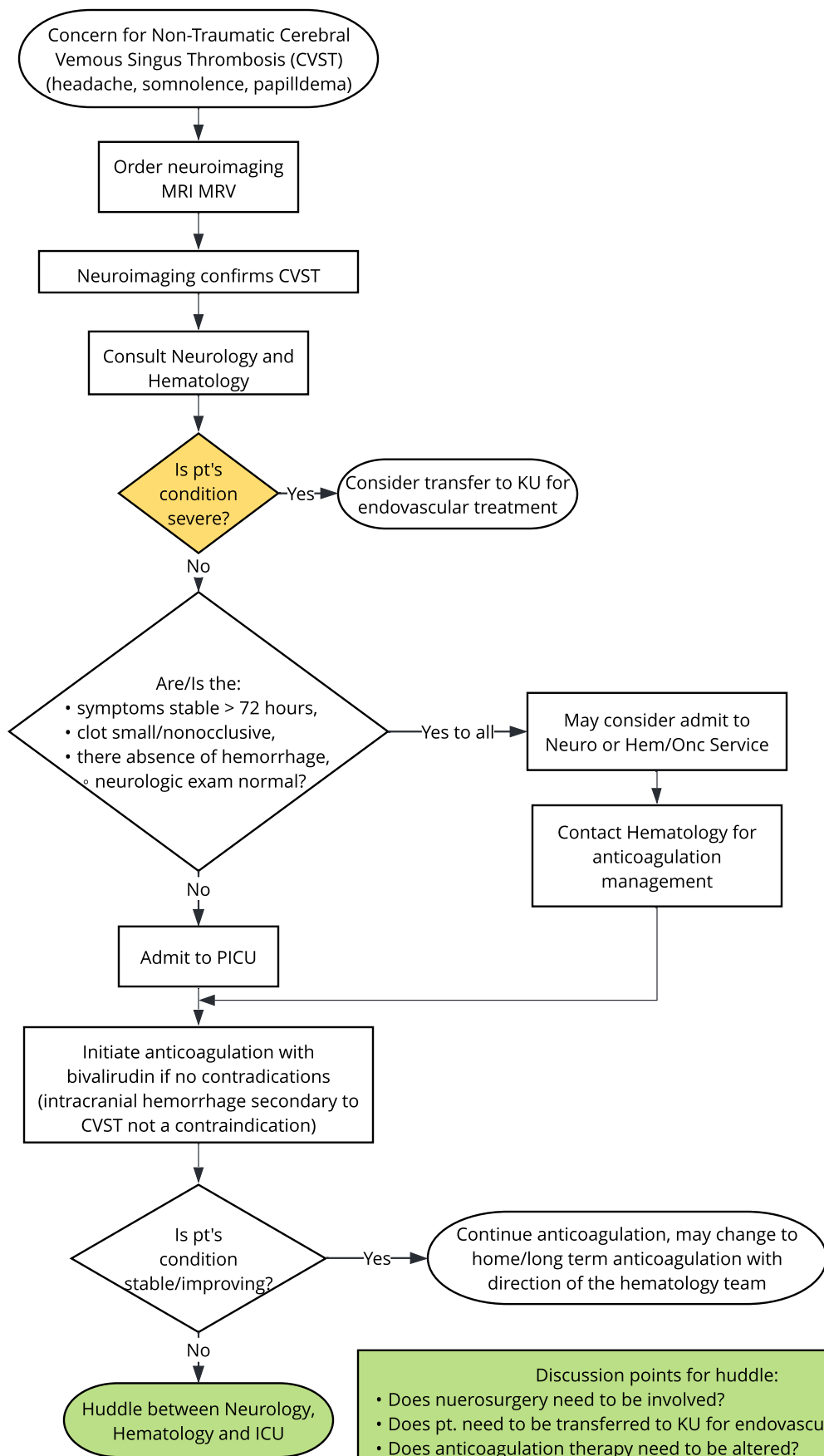
Additional algorithms

Severe Conditions:

- comatose
- rapidly progressing symptoms
- extensive clot burden
- large secondary hemorrhage
- cerebral edema
- worsening clinical picture despite anticoagulation

Additional treatment considerations:

- Pain control (avoid NSAIDS)
- Evaluate for iron deficiency anemia
- Consider hypercoag workup
- Ophthalmology consult
- Diamox for headache vision changes
- Fluids as needed



Discussion points for huddle:

- Does neurosurgery need to be involved?
- Does pt. need to be transferred to KU for endovascular treatment?
- Does anticoagulation therapy need to be altered?
- Does imaging need to be repeated?