

QR code for mobile access



**Exclusion Criteria:**

- Less than 60 days of age with fever (Febrile Infant CPG)

**Special Considerations:**

- Anatomic abnormalities (including cleft palate)
- Genetic conditions with craniofacial abnormalities (such as Down Syndrome)
- Presence of cochlear implants
- Immune deficiencies

**Criteria for diagnosis of AOM:**  
Middle ear effusion **PLUS one** of the following:

- Moderate/severe bulging of TM (image)
- Mild bulging of TM and 48 hours of otalgia
- Mild bulging of TM (image) and intense erythema of the TM
- New onset otorrhea **NOT** caused by otitis externa

**Non-Severe Symptoms:**

- Mild otalgia <48 hours **AND**
- Temperature < 39°C (102.2°F)

**Severe Symptoms:**

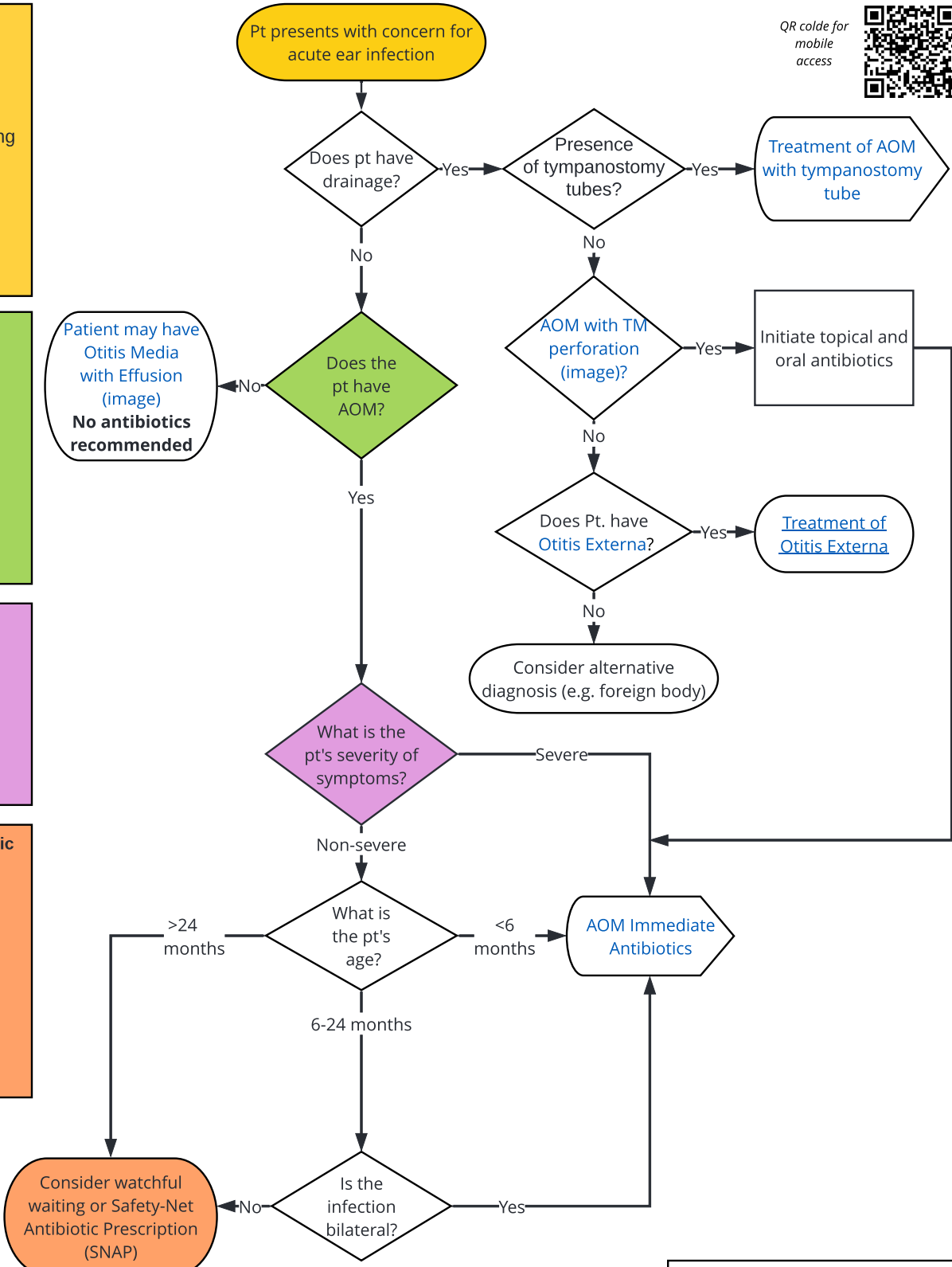
- TM perforation
- Moderate/severe otalgia **OR**
- Otalgia ≥ 48 hours **OR**
- Temperature ≥ 39°C (102.2°F)

**Watchful waiting / Safety-Net Antibiotic Prescription (SNAP):**

- Joint decision between provider and caregiver
- Emphasize appropriate pain control
- Must have close follow-up (within 48-72 hours) if SNAP not given
- Must be able to fill prescription if signs/symptoms worsen or fail to improve in 48-72 hours

**Education Handouts:**

- Otorrhea with Tubes
- Otorrhea with Tubes (Spanish)
- Otorrhea without tubes
- Otorrhea without tube (Spanish)
- Watchful Waiting
- Watchful Waiting (Spanish)
- SNAP Flyer for Providers
- SNAP Visual Aid



**Abbreviations/Acronyms (lab, radiology excluded):**  
 pt = patient  
 AOM = Acute Otitis Media  
 TM = Tympanic membrane