



Associated Power Plans:

ED/Urgent Care: EDP Gastroenteritis Pathway

Inpatient: Gastroenteritis Pathway



QR code for mobile view

[Diagnostic algorithm](#)

Inclusion criteria:

- Pt \geq 3 months of age
- Diarrhea of recent onset $<$ 7 days
- With or without vomiting, fever, nausea, or abdominal pain

Exclusion Criteria

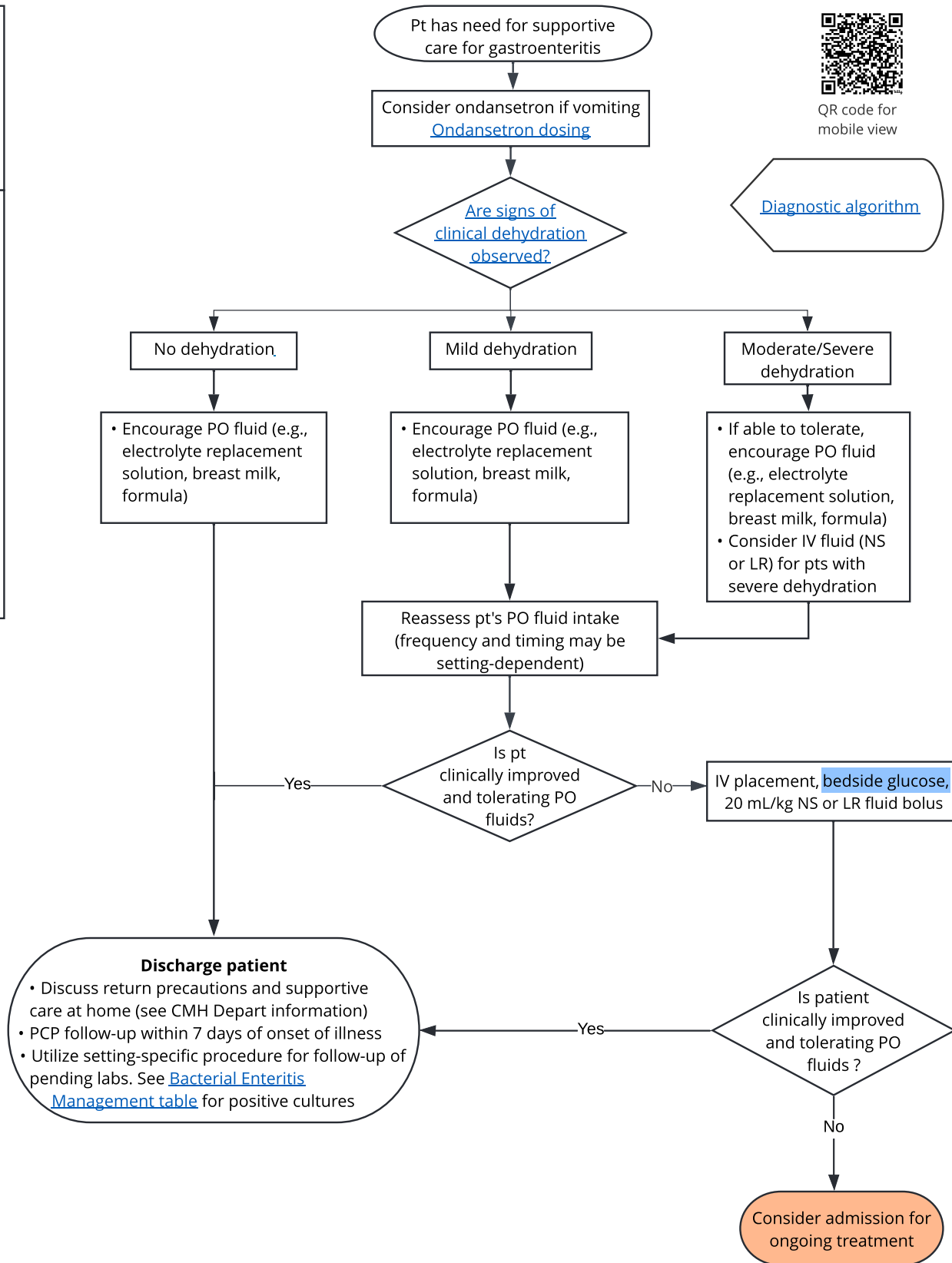
- Pt $<$ 3 months of age
- Immune compromised
- Toxic appearance (consider sepsis and refer to [Sepsis pathway](#))
- Uncompensated hypovolemic shock
- Vomiting with no diarrhea for $>$ 24 hours
- Bilious emesis (consider bowel obstruction)
- Acute surgical abdomen
- Head injury
- Chronic disease (e.g., renal failure, inflammatory bowel disease, liver disease)
- Need for intensive care unit

Management of hypoglycemia

- POC blood glucose $<$ 70
- Treat with 15 g of glucose PO (4 ounces of juice or gel)
- If not tolerating any PO, treat with D10 IVF bolus
- Repeat blood glucose in 15 minutes
- Repeat treatment if needed

Inpatient Management:

- Continue isotonic IV fluids while not tolerating PO
- Reconsider [diagnostic algorithm](#)
- Avoid NSAIDs and other potentially nephrotoxic medications or IV contrast
- Daily weights
- Strict measurement of intake and urine output
- If concerned for acute kidney injury, obtain BMP
- If concerned for HUS, obtain CBC and BMP (see [information about HUS](#))



Abbreviations:

HUS = hemolytic uremic syndrome