



Inclusion criteria:

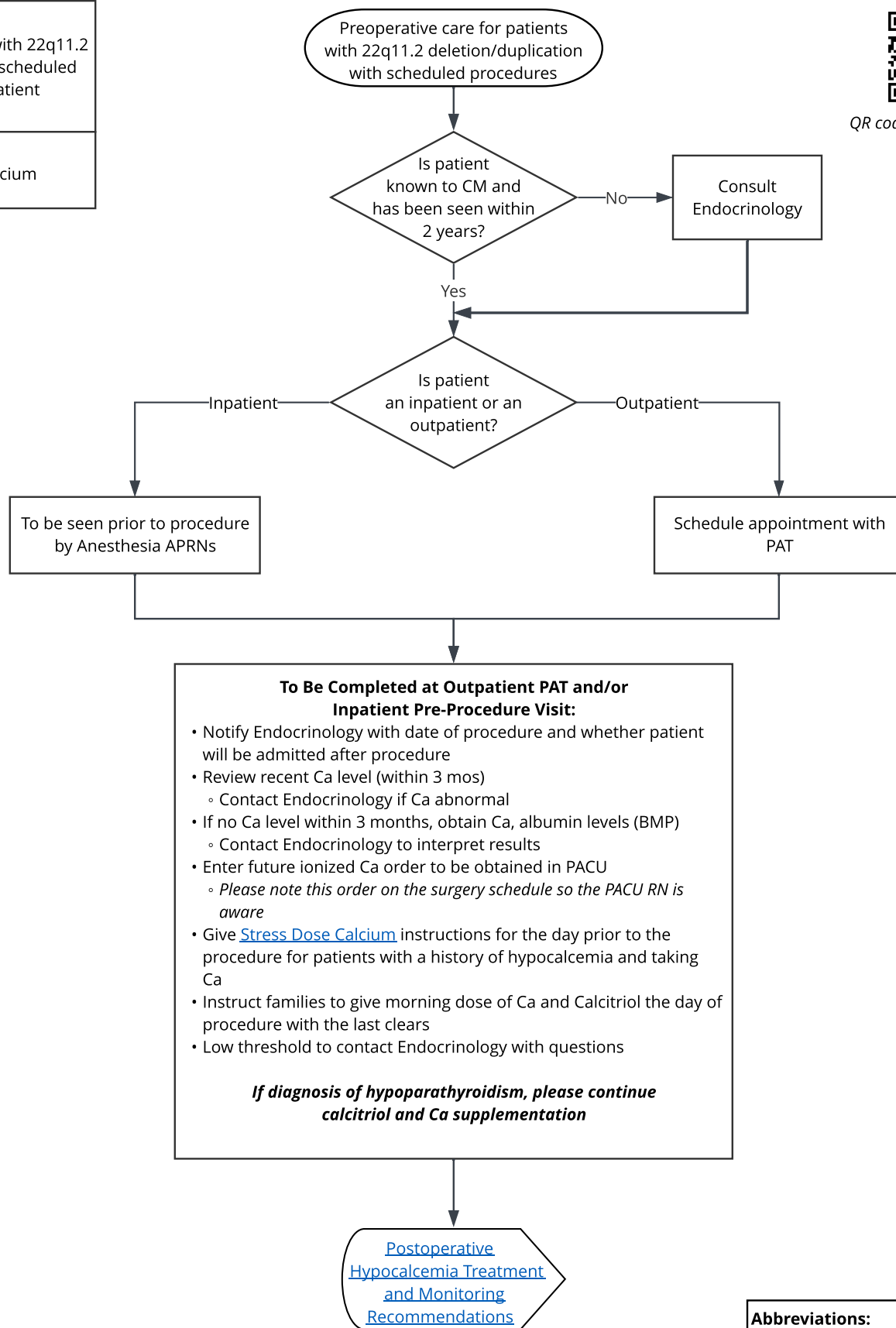
- Patients diagnosed with 22q11.2 deletion/duplication scheduled for inpatient or outpatient procedures

Exclusion criteria:

- Patients receiving calcium infusion



QR code for mobile view



Abbreviations:

PAT = Preadmission Testing
PACU = Post-anesthesia Care Unit
Ca = Calcium



Inclusion criteria:

- Patients diagnosed with 22q11.2 deletion/duplication scheduled for inpatient or outpatient procedures

Exclusion criteria:

- Patients receiving calcium infusion

Postoperative care for patients with 22q11.2 deletion/duplication following procedures

Collect Ionized Ca in PACU

PACU RNs to notify Endocrinology team via Web OnCall or pager (816-458-4736) to monitor results

[Preoperative Care](#)



QR code for mobile view

Is the patient admitted?

Yes

No

Inpatient

- Continue Ca monitoring (BMP) every 4 - 6 hrs
 - Order placed by inpatient team
 - Results discussed with Endocrinology team

Outpatient

- Labs ordered by primary endocrinologist

• If two normal Ca levels more than 8 hrs apart (Ca and/or Ionized Ca), may discontinue monitoring
• [Discharge instructions](#)

Ca lower cutoffs:

- Ca < 8.5 mg/dL
- Ionized Ca < 1.1 mm/L

• Typically, if Ca normal, check Ca again 2 - 3 days post-discharge
• [Discharge instructions](#)

Treatment for Ca/Ionized Ca below cutoff:

- Consult Endocrinology
- [Give oral/IV Calcitriol -and-](#)
[Oral Calcium](#)
- Goal: Start within 4 hrs of surgery
- Asymptomatic:
 - Start at lower end of suggested dose ranges
- **Signs/symptoms of hypocalcemia:**
 - Consider escalation

Signs and symptoms of hypocalcemia:

- Perioral numbness
- Tingling of the hands or feet
- Anxiety and/or depression
- Fatigue
- Hypotension
- Tetany
- Muscle cramps and/or spasms (especially during measurement of blood pressure)

Is escalation needed?

Yes

No

Escalation

- [Consider oral/IV Calcitriol](#)
- [IV Calcium](#)
- Consider transfer to ICU
- Discuss with inpatient Endocrinology

[Discharge instructions](#)

Abbreviations:

Ca = Calcium
PACU = Post-anesthesia Care Unit
ICU = Intensive Care Unit