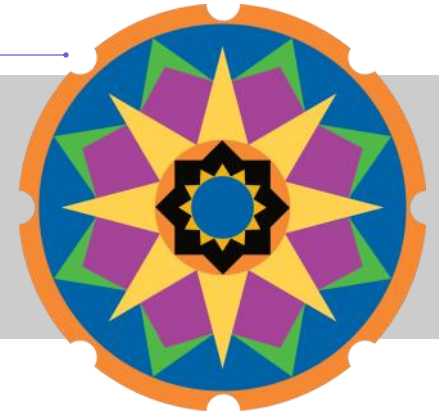


TRAINING NEWSLETTER



See Inside for:

- *Introduction to interns and fellows, and updates on last year's trainees*
- *Description of training programs and of Kansas City*
- *Photos of our psychology group*

INTRODUCING THE 21ST CHILDREN'S MERCY INTERN CLASS!

Please welcome the 2016 intern class to our quickly growing Psychology Section!

Sunny Hwang, MA, comes to us from George Washington University where her dissertation is titled "Parental Self-Efficacy and Father Involvement among Low-Income Fathers." Her research interests center on father involvement and co-parenting among low-income families. Her clinical interests focus on assessment and treatment of children with ADHD, LD, and mood disorders. When not at work, she enjoys exploring the city and trying out new restaurants.

Natalie Brei, MA, is attending the University of Wisconsin-Milwaukee, where her dissertation is piloting an online response inhibition intervention for children with Williams

syndrome. Her research interests focus on factors that influence conditioning and treatment response in children with neurodevelopmental conditions, and her clinical interests center on Integrated Primary Care and common presenting problems like ADHD, behavioral problems, habit disorders, and toileting difficulties. Outside of work she enjoys biking, cooking, and exploring the city with her family.



Will Frye, MA, joins us from Auburn University where his dissertation focuses on the role of executive functioning on the intention-behavior relationship of health behaviors. His clinical and research interests center on health behaviors and well-being, particularly in children and adolescents with chronic illness. When not at work, he enjoys running, exercise, community events, and watching sports ("War Eagle" and "Go Vols"!).

THREE FELLOWS FOR 2016-2017

As training opportunities continue to develop in our Section, we welcome three fellows this academic year!

Kristin Thompson, PhD, graduated from Northern Illinois University and completed internship at University of Michigan's Mary A. Rackham Institute. Her primary clinical and research interests focus on trauma, parenting,

mindfulness, and acceptance-based treatments. Outside of work she enjoys day trips and random adventures to new places with her family, and also likes to quilt, refinish furniture, and try out other creative projects.

Kyle Bersted, PhD, graduated from Southern Illinois University, Carbondale, and interned at the University of Louisville School of Medicine. His research interests broadly focus on gene-environment interactions, parenting, and externalizing behaviors in children. His clinical interests focus on multidisciplinary medical teams, inpatient consultation/liaison, and working with teenagers struggling with suicidality and internalizing disorders. Outside of work, he enjoys live music, spending time with friends, and obsessing over Chicago sports (especially the Cubs).

Allison Zoromski, PhD, graduated from Ohio University and interned at Cincinnati Children's Hospital. Her primary clinical interests include assessment and intervention for ADHD and disruptive behavior disorders. Her research centers on the dissemination of interventions for youth with disruptive behavior in community settings, and her dissertation focused on helping middle school teachers with classroom management strategies. Outside of work, she loves to play softball!

TRAINING NEWSLETTER

Find more information at: <http://www.childrensmercy.org/APA/>



Kansas City is a great place to live, with lots to do (parks, museums, jazz clubs, sports, etc), and a reasonable cost of living!

PRIOR INTERNS

Former CMH interns are working across the US in academic medical centers, private hospitals, group and private practices, and teaching at colleges and universities.

UPDATE ON LAST YEAR'S TRAINEES

Our interns:

Sherilynn Chan, PhD, graduated from the University of Miami and began a two year clinical/research fellowship at Medical College of Wisconsin focused in pediatric psycho-oncology.

Alana Goldstein, PsyD, graduated from Xavier University and began a two year clinical/research fellowship at Children's Healthcare of Atlanta focused in Sickle Cell.

Cynthia Pierre, PhD, graduated from Loyola University Chicago and began a one year clinical fellowship at Christian Sarkine Autism Treatment Center at Indiana University School of Medicine/Riley Hospital with a focus in Autism/Developmental Disabilities.

Our fellows:

Girwan Khadka, PhD, completed fellowship and stayed at Children's Mercy working as the dedicated clinical psychologist for psychiatry.

Gail Robertson, PhD, completed fellowship and stayed on at Children's Mercy working as the dedicated clinical psychologist for Rheumatology, Dermatology, and Sickle Cell Chronic Pain Program.

Greg Schutte, PhD, completed fellowship and began a position as a Visiting Assistant Professor at University of South Dakota School Psychology Program.



OTHER D&B TRAINEES

In addition to psychology interns and post-doctoral fellows, our division includes eight one-year practicum students (7 clinical and 1 research this year) from area universities including the University of Kansas (Clinical Psychology, Child Clinical, and Counseling Psychology programs), and the University of Missouri-Kansas City (Clinical Psychology and Counseling Psychology programs).

We also host Pediatrics residents for one-month rotations, and these residents spend time with our Psychiatrists, Developmental/Behavioral Pediatricians, and Psychologists in a variety of clinical settings.

Our psychiatry team provides training for Child Psychiatry Fellows from KU, who complete a 3-month rotation including experience with inpatient consults and outpatient clinics.

And, the Division of Developmental and Behavioral Sciences provides fellowship training in Developmental Behavioral Medicine! Our current D&B fellows are:

Candice Allen, MD
July Jean, MD
Jose Lopez-Lizarraga, MD
Elizabeth Milkovich, MD
Grace Winningham, MD

THE CHILD PSYCHOLOGY INTERNSHIP AT CMH

The psychology internship at Children's Mercy provides intensive training in psychological assessment, treatment, and interdisciplinary collaboration in the context of a dedicated pediatric academic health care environment. By providing the highest-quality supervision and training, the program aims to facilitate a well-balanced set of clinical and professional skills to prepare interns for successful careers as psychologists.

The internship is accredited by the American Psychological Association, and is a member of the Association of Psychology Postdoctoral and Internship Centers (AAPIC).

Both the Clinical Child and Pediatric Psychology tracks aim to provide interns with:

(A) a variety of depth and breadth of experience within a pediatric academic medical center,

(B) opportunities for interprofessional development and collaboration through integration into pediatric subspecialty clinics, and

(C) knowledge of successful integration of research into clinical practice.

CLINICAL CHILD TRACK

A year-long outpatient clinical child experience as well as three, 4-month long (2 days per week) specialty rotations. Interns may choose concentrated experiences in 3 out of 5 rotation options: ADHD/Behavioral Pediatrics, Childhood Traumatic Stress, Eating Disorders, Feeding and Elimination, or Special Needs. Training also includes didactics and opportunity for research. The clinical child track emphasize experiences that build skills that will prepare interns to be competitive for fellowships in clinical child psychology and for careers in academic medical centers, primary care clinics, private practice, and a variety of settings.

PEDIATRIC PSYCHOLOGY TRACK

A full year of experience in inpatient consultation/liaison and outpatient child psychology clinic as well as three 4-month long rotations in medical specialty clinics, neuropsychology, and pain management. Training also includes didactics and opportunities for research. The pediatric psychology track emphasize experiences that build skills that will promote interns being competitive for pediatric fellowships and being successful in careers as pediatric psychologists.

SEE WEBSITE AND APPIC DOCUMENTS FOR FULL DESCRIPTIONS OF THE INTERNSHIP AND TRACKS!

<http://www.childrensmercy.org/APA/>

INTRODUCING OUR PSYCHOLOGISTS...

The remainder of this newsletter includes information about the psychologists who are members of our Division. Each of the faculty interact with interns. Some may be primary supervisors or mentors, others may supervise during a major clinic rotation or "mini" medical rotation, and others provide didactics. All, though, are interested in helping interns to have the best experience possible during their year at Children's Mercy.

Our Staff have provided this information to help you get to know us and what Children's Mercy has to offer. These are

obviously very abbreviated descriptions; for more information, you can find a biosketch and/or full CV on the website for all our Medical Staff. **In fact most of these are linked by clicking on the picture for each psychologist!**

Psychologists are organized by the primary track in which they would likely interact with interns, although some interact with interns across both tracks. It's also worth noting that our 50 psychologists work on multidisciplinary inpatient and outpatient teams throughout the entire hospital!



TRAINING NEWSLETTER

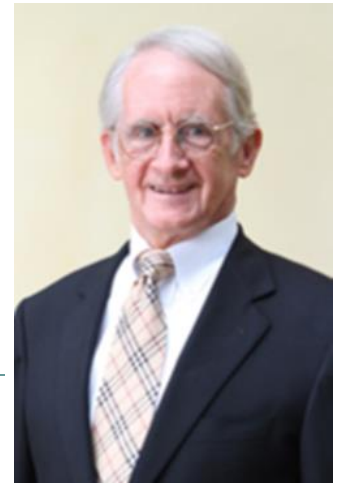
Clinical Child Specialists



Brian Belden, PhD

Assistant Professor of Pediatrics

Specialties: Attention Deficit Disorders, Parenting, Pediatric Psychology, Learning Disabilities, Psychological Testing, Developmental Disorders



Edward R. Christophersen, PhD, ABPP

Professor of Pediatrics

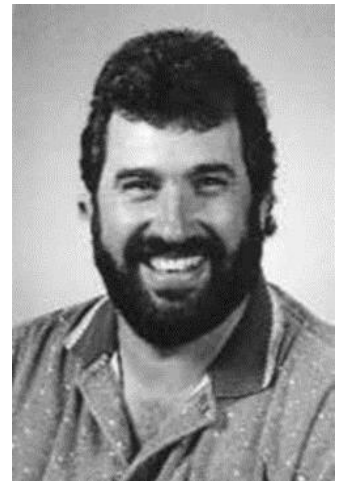
Specialties: ADHD; Toileting Problems; Anxiety Disorders in Young Children; Parenting Issues



David H. Bennett, PhD

Associate Professor of Pediatrics

Specialties: Attention Deficit Disorders, Learning Disabilities, School-Related Anxieties and Difficulties, Psychological Testing



Vincent J. Barone, PhD

Associate Professor of Pediatrics

Specialties: Common Childhood and Adolescent Behavior Disorders; School Problems; Parenting Issues; Externalizing Disorders; Behavioral Treatments for Pervasive Developmental Disorders; Applied Behavior Analysis; Injury Prevention Strategies



Rochelle L. Harris, PhD, ABPP

Associate Professor of Pediatrics

Specialties: Learning Disabilities, Attention Deficit Disorders, Adjustment and Behavioral Problems, Autism Spectrum Disorders



Christine Moser, PsyD

Associate Professor of Pediatrics

Specialties: Psychological Testing; Gender Dysphoria; Child and Adolescent Psychotherapy; Suicide Risk and Resilience in Adolescence

Click on pictures to link to more information online!

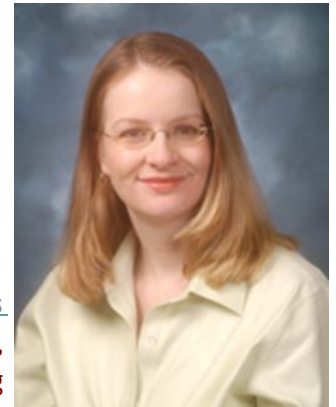
Clinical Child Specialists



Julia E. Thompson, PhD

Assistant Professor of Pediatrics

Specialties: Child Clinical Psychology;
Trauma Psychology



Christy A. Kleinsorge, PhD

Assistant Professor of Pediatrics

Specialties: Chronic Illness, Parenting Issues,
Psychological Testing, Feeding



Briana A. Woods-Jaeger, PhD <no link>

Assistant Professor of Pediatrics

Specialties: CMH at Operation Breakthrough, Anxiety
Disorders; Multi-Problem Clinical Presentations; Com-
munity-Based Mental Health



Timothy R. Apodaca, PhD

Associate Professor of Pediatrics

Specialties: Adolescent Mental Health; Substance
Abuse; Mood Disorders



Girwan Khadka, PhD

Clinical Assistant Professor of Pediatrics

Specialties: Child and Adolescent Mental Health;
Coordinating care with Psychiatry



Leslee T. Belzer, PhD

Assistant Professor of Pediatrics

Specialties: Psychological services in Primary Care for chil-
dren with medical complexity, siblings and parents; Psycho-
logical testing; Treating Anxiety Disorders in young children

TRAINING NEWSLETTER

Development & Autism Spectrum



Victoria C. Little, PhD

Associate Professor of Pediatrics

Specialties: Evaluation of Autism Spectrum Disorder and Developmental Disorders in children age 12 months to 5 years

Cynthia R. Call, PsyD

Clinical Assistant Professor of Pediatrics

Specialties: Autism Assessment and Early Intervention, School Problems and Consultation, Mood and Affective Disorders, Attention Deficit Disorders, Child Trauma and Maltreatment



Cy B. Nadler, PhD

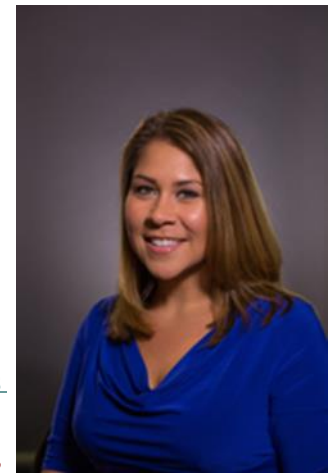
Assistant Professor of Pediatrics

Specialties: Disruptive and Severe Behavioral Problems; Behavioral Parent Training; Autism and Neurodevelopmental Disabilities Research

Christina M. Low Kapalu, PhD

Clinical Assistant Professor of Pediatrics

Specialties: Autism Spectrum Disorders; Common Behavioral Problems (Non-Compliance, Aggression, Self Injurious Behavior and Toileting Difficulties); Constipation and Incontinence (through GI)



Click on pictures to link to more information online!

Development & Autism Spectrum



Natalie M. Passanante, PsyD

Clinical Assistant Professor of Pediatrics

Specialties: Autism Spectrum Disorder; Disruptive Behavior Disorders; Anxiety Disorders



JoAnn "Bo" Youngblood, PhD

Assistant Professor of Pediatrics

Specialties: Autism Spectrum Disorders; non-compliance, ADHD, enuresis, toilet training, tantrums, aggression, pill-swallowing



Katie L. Lindberg, PsyD

Assistant Professor of Pediatrics

Specialties: Assessment of autism, ADHD, and developmental disabilities



Brenda Salley, PhD

Assistant Professor

Specialties: Developmental Psychology; Cognitive Psychology; Baby Lab at KU Med Center

TRAINING NEWSLETTER

Eating Disorders



Kathryn B. Pieper, PhD

Associate Professor of Pediatrics

Specialties: Eating Disorders; Adolescent Psychotherapy



Sara R. Gould, PhD

Assistant Professor of Pediatrics

Specialties: Eating Disorders; Adolescent Development and Mental Health; Psychoeducational Assessment



Carla C. Allan, PhD

Associate Professor of Pediatrics

Specialties: ADHD; Disruptive Behavior Disorders; Anxiety Disorders

ADHD



Trista A. Perez, PhD

Clinical Assistant Professor of Pediatrics

Specialties: ADHD; Autism; Developmental Disabilities; Behavioral Interventions and Diagnostic Assessment for Spanish Speaking and Underserved Populations



Simone S. Moody, PhD

Clinical Assistant Professor of Pediatrics

Specialties: ADHD; Disruptive Behavior Disorders; Behavioral Pediatrics

Click on pictures to link to more information online!

Neuropsychology



John "Josh" Hall, PhD

Assistant Professor of Pediatrics

Specialties: Neuropsychological Assessment, Outcomes of Epilepsy, Surgery, Congenital Heart Surgery, Tic Disorder, Learning Disorders



Maria D. Korth, PhD

Assistant Professor of Pediatrics

Specialties: Neuropsychology, Rehabilitation, Concussion Management, Traumatic Brain Injury and Spina Bifida



Paul Glasier, PhD, ABPP

Associate Professor of Pediatrics

Specialties: Neuropsychological Assessment, Epilepsy, Epilepsy Surgery, Hematological/Oncological Disorders, Cardiac Disease



Elizabeth J. Willen, PhD

Clinical Assistant Professor of Pediatrics

Specialties: Neuropsychological Assessment, Congenital Heart Defects, Neurocognitive Outcomes in Infants and Toddlers

TRAINING NEWSLETTER

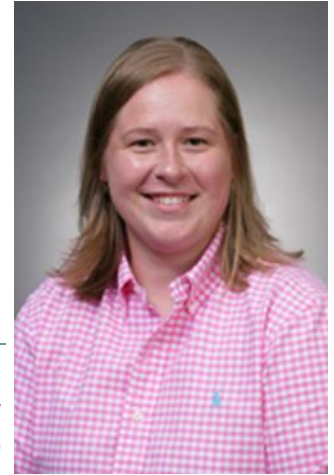
Hematology/Oncology



Lynne M. Covitz, PhD, ABPP

Associate Professor of Pediatrics

Specialties: Chronic Illness with Dedicated Services to Hematology/Oncology, Psychology Training, Ethics



Rachel M. Moore, PhD

Assistant Professor of Pediatrics

Specialties: Chronic Illness and Treatment Adherence; Pediatric Hematology/Oncology; Pediatric Nephrology (Dialysis/Kidney Transplantation)



Gail Robertson, PhD

Assistant Professor of Pediatrics

Specialties: Chronic Illness with Dedicated Services to Rheumatology, Hematology (Sickle Cell disease), and Dermatology

Weight Management



Meredith L. Dreyer Gillette, PhD

Associate Professor of Pediatrics

Specialties: Childhood Obesity; Treating Children with Special Needs (ASD, Down Syndrome, Developmental Disabilities) and Obesity; Type 2 Diabetes



Amy R. Beck, PhD, RYT 200

Associate Professor of Pediatrics

Specialties: Pediatric Obesity, Weight Bias and Stigma, Psychological Trauma, Integration of Yoga with Psychotherapy

Click on pictures to link to more information online!

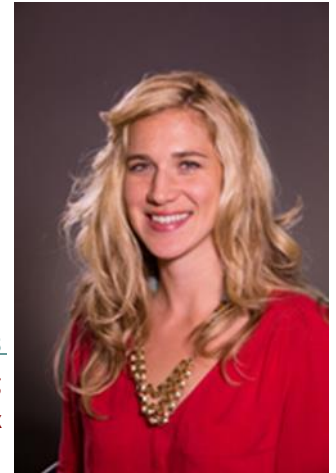
Consultation/Liaison & Chronic Pain



Janelle Mentrikoski, PhD

Assistant Professor of Pediatrics

Specialties: Inpatient Consultation/Liaison; Pain Management



Klanci M. McCabe, PhD

Clinical Assistant Professor of Pediatrics

Specialties: Inpatient Consultation/Liaison; Pain Management; Biofeedback



Sarah Beals-Erickson, PhD

Assistant Professor of Pediatrics

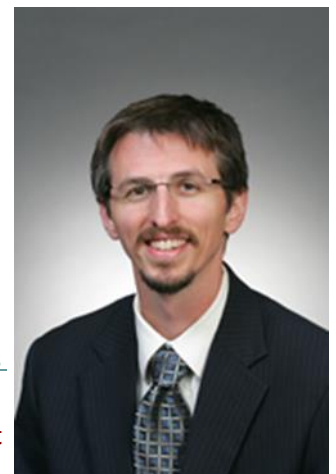
Specialties: Pain Management; Pediatric Pain Rehabilitation; Pediatric sleep disorders



Mark A. Connelly, PhD

Professor of Pediatrics

Specialties: Chronic and Acute Pain; Somatization Disorders; Adjustment Disorders



Dustin P. Wallace, PhD

Associate Professor of Pediatrics

Specialties: Pain Management; Pediatric Pain Rehabilitation; Acceptance-Based Treatment

TRAINING NEWSLETTER

Gastroenterology, Hepatology, & Nutrition



Rebecca J. Johnson, PhD, ABPP

Associate Professor of Pediatrics

Specialties: Kidney Dialysis and Transplant; Intestinal Rehabilitation; Cystic Fibrosis; Adherence



Jennifer V. Schurman, PhD, ABPP

Professor of Pediatrics

Specialties: Childhood Chronic Illness; Functional Abdominal Pain; Biopsychosocial Interactions; Pain Prevention; Volitional Nonadherence



Michele H. Maddux, PhD

Assistant Professor of Pediatrics

Specialties: Pediatric Inflammatory Bowel Disease; Adherence to Treatment Regimen; Transition from Pediatric to Adult-Focused Care



Amanda D. Deacy, PhD

Associate Professor of Pediatrics

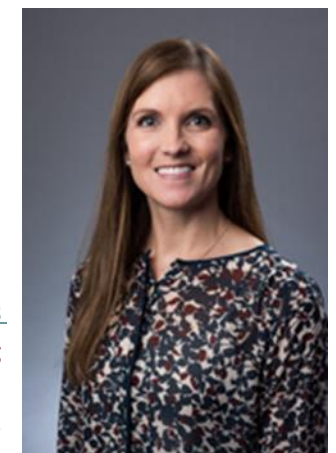
Specialties: Pediatric Functional Gastrointestinal Disorders (FGIDs); Internalizing Disorders; Acceptance-Based Intervention



Laura E. Slosky, PhD

Clinical Assistant Professor of Pediatrics

Specialties: Gastroenterology; Feeding Disorders; Elimination Disorders



Jamie L. Ryan, PhD

Assistant Professor of Pediatrics

Specialties: Pediatric liver disease and transplant; Adherence; Family Allocation of Treatment Responsibility; Adjustment to Pediatric Chronic Illness

Other Specialty Teams



Anna M. Egan, PhD, ABPP

Associate Professor of Pediatrics

Specialties: Endocrine/Diabetes, Disorders of Sexual Development, Gender Incongruence, Adjustment to Diagnosis/Chronic Illness, Nonadherence to Medical Treatment

Jami N. Gross-Toalson, PhD

Assistant Professor of Pediatrics

Specialties: Treatment Adherence; Transition to Adult Health Care; Pediatric Cardiology and Transplant



Tiffany Willis, PsyD

Assistant Professor of Pediatrics

Specialties: Infant Mental Health; Attachment; Special Healthcare Needs; Minority and Underserved Populations

Kevin C. Smith, PhD

Associate Professor of Pediatrics

Specialties: Pediatric Sleep Disorders



Hilary C. Boorstein, PhD

Assistant Professor of Pediatrics

Specialties: Significant/Multiple Disabilities (Assessment and Behavioral treatment); Cognitive/Behavioral Effects of Genetic Disorders; Down Syndrome; Special Education Advocacy; Feeding Disorders in Medically-Complex Children

Main Campus:

2401 Gillham Road
Kansas City, MO 64108

South Campus:

5520 College Blvd, Suite 425
Overland Park, KS 66211



www.childrensmercy.org

For children. For families. For answers.

DEVELOPMENTAL & BEHAVIORAL SCIENCES MEDICAL STAFF

LEADERSHIP

Division Director

Michele Kilo, MD

Psychology Section Chief

Lynne Covitz, PhD, ABPP

Clinical Child Psychol. Lead

Brian Belden, PhD

Pediatric Psychology Lead

Rebecca Johnson, PhD, ABPP

Psychology Training Director

Anna Egan, PhD, ABPP

Assoc. Training Directors

Maria Korth, PhD (Peds track)

Christy Kleinsorge, PhD (Clin track)

Cynthia Call, PsyD (Post-docs)

Rachel Moore., PhD (Practicum)

Newsletter Editor

Dustin P. Wallace, PhD

Psychologists

Carla Allan, PhD

Tim Apodoca, PhD

Vincent Barone, PhD

Sarah Beals-Erickson, PhD

Amy Beck, PhD

Brian Belden, PhD

Leslee Belzer, PhD

Dave Bennett, PhD

Hilary Boorstein, PhD

Cynthia Call, PsyD

Ed Christophersen, PhD, ABPP

Mark Connelly, PhD

Lynne Covitz, PhD, ABPP

Trista P. Crawford, PhD

Amanda D. Deacy, PhD

Meredith Dreyer Gillette, PhD

Anna Egan, PhD, ABPP

Paul Glasier, PhD, ABPP

Sara Gould, PhD

Jami Gross-Toalson, PhD

Josh Hall, PhD

Rochelle Harris, PhD, ABPP

Rebecca Johnson, PhD, ABPP

Girwan Khadka, PhD

Christy Kleinsorge, PhD

Maria Korth, PhD

Katie Lindberg, PsyD

Vicki Little, PhD

Christina Low Kapalu, PhD

Michele Maddux, PhD

Klanci McCabe, PhD

Janelle Mentrikoski, PhD

Simone Moody, PhD

Rachel Moore., PhD

Christine Moser, PsyD

Cy Nadler, PhD

Natalie Passanante, PsyD

Kathryn Pieper, PhD

Gail Robertson, PhD

Jamie Ryan, PhD

Brenda Salley, PhD

Jennifer Schurman, PhD, ABPP

Laura Slosky, PhD

Kevin Smith, PhD

Julia Thompson, PhD

Dustin P. Wallace, PhD

Elizabeth Willen, PhD

Tiffany Willis, PsyD

Briana Woods-Jaeger, PhD

Bo Youngblood, PhD

Psychiatrists

Bob Batterson, MD, FAACAP

Catherine Madden, MD., FAACAP

Shayla Sullivant, MD, FAACAP

Lindsay Tobler, MD, FAACAP

Debra Willsie, DO, FAACAP

Developmental Pediatricians

Benjamin Black, MD

Lisa Campbell, MD, FAAP

Carol Daniel, MD, FAAP

Carol Garrison, MD, FAAP

Elizabeth Hastings, MD

Michele Kilo, MD

Tarah Kruger, MD

Sarah Nyp, MD, FAAP

Anna Schwieger, MD

Sarah Soden, MD, FAAP

Lisa Spector, MD

