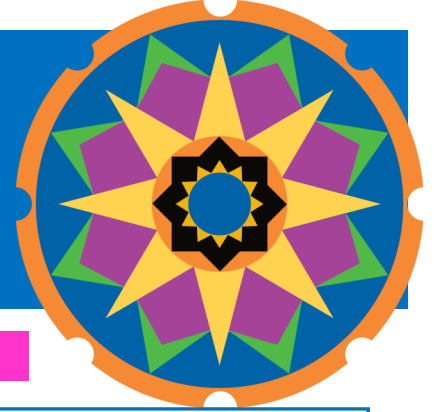


Children's Mercy Kansas City
Division of Developmental and Behavioral Health
Section of Psychology
The Psychology Training Programs

Issue 17
2020–2021

See Inside for:

- *Introduction to new psychology trainees and updates on last year's training class*
- *Description of training programs and of Kansas City*
- *Introduction to our psychology faculty*



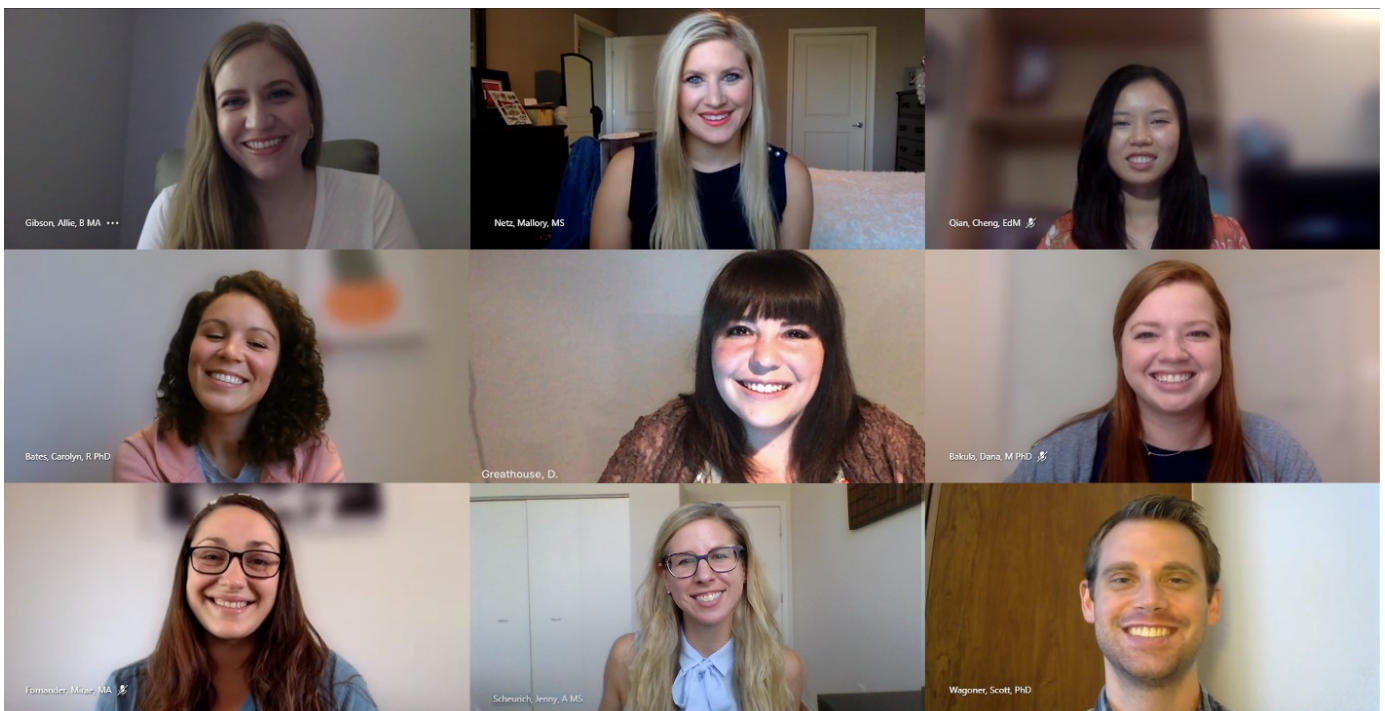
Introducing the 25th Children's Mercy Training Class!

**Introducing
the
Class
of
2020-2021**

Children's Mercy Kansas City Division of Developmental and Behavioral Health is excited to introduce the largest training class to date with four predoctoral psychology interns and five postdoctoral psychology fellows.

Children's Mercy serves a diverse population of children, adolescents, and families from a four-state region and is nationally ranked among the best children's hospitals in the nation by *U.S. News & World Report*. The training program provides advanced training in psychological assessment, treatment, consultation, and interdisciplinary collaboration in the context of a dedicated pediatric medical center. In addition to clinical experiences, trainees participate in didactic training, including case conferences, grand rounds, supervision seminars, and other educational programming.

Pictured from top left below: Allie Gibson, Mallory Netz, Cheng Quian; Center Row: Carolyn Bates, Dawn Greathouse, Dana Bakula; Bottom Row: Mirae Fornander, Jenny Scheurich, and Scott Wagoner

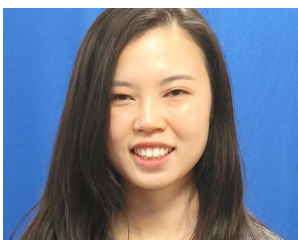




Ashley Dawn Greathouse, M.A., BCBA, attends the Combined-Integrated Clinical and Counseling doctoral program at the University of South Alabama. Her dissertation focuses on parent-child interaction therapy for children with Autism Spectrum Disorder. Her clinical interests include assessment intervention with a wide range of concerns (e.g. autism spectrum, attention deficits, disruptive behavior, anxiety, depression, and trauma). She particularly enjoys assessing, planning, and implementing behavior modification procedures. Outside of work, she likes to read and loves playing with her two young boys every chance she gets!

Cheng Qian, Ed.M., is completing the clinical psychology program from PGSP-Stanford PsyD Consortium. Her dissertation focuses on executive functioning profiles of survivors of pediatric stem cell transplantation. Her research interests include parenting behaviors, executive functioning and culturally sensitive assessment practices. Her clinical interests include parent training and neurodevelopmental disabilities. In her free time, she loves hiking, baking, listening to audiobooks, and exploring cultures around the world. She dreams of visiting 30 countries

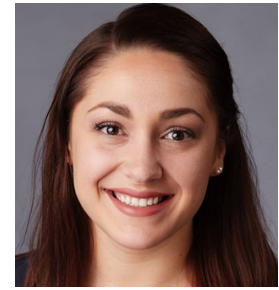
by the age of 30.



Meet the Interns



Jenny Scheurich, M.S., comes to us from the Clinical Psychology doctoral program at the University of Central Florida. Her dissertation explores the role of fear and anxiety in parents of children with Type 1 Diabetes. Her research and clinical interests include anxiety and pediatric psychology. During her internship, she is most interested in enhancing her knowledge and skills related to somatic symptoms and pain management. Beyond the workplace, she enjoys traveling. Most recently, she and her partner camped, hiked, and kayaked in the fjords of Norway. She also likes music and spending time with family and friends.



Mirae J. Fornander, M.A., joins us from Las Vegas Clinical Psychology Doctoral Program at the University of Nevada. Her dissertation examines defining problematic school absenteeism and identifying youth at risk. Her clinical interests include anxiety, primary care, hematology/oncology, and working with medically complex patients. She enjoys spending time with her husband, baby girl, and two pups. They like to spend time outside, hiking, kayaking, or walking. She loves to try new restaurants, watch reality TV, and carry around books that she keeps saying she is going to read. She and her husband are avid hockey fans and love the Vegas Golden Knights.

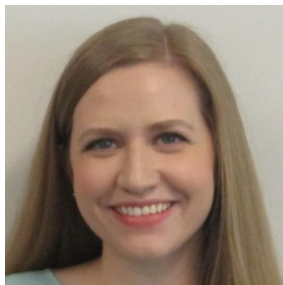
The Class of 2019- 2020 shows "MERCY" pride on the final day of training.



Meet the Fellows



Carolyn Bates, Ph.D., graduated from the Clinical Psychology Program at Loyola University in Chicago. She pursued internship on the pediatric track at Children's Mercy Kansas City. She is currently completing her second year of a two-year clinical and research postdoctoral fellowship. The fellowship occurs jointly with Children's Mercy and University of Kansas Medical Center while working with populations in hematology and oncology. Carolyn is interested in family influences on pediatric health with research pursuits exploring parent distress and changes in the home environment following new pediatric cancer diagnosis. Additional studies concern parenting practices following cancer diagnosis and impact on child emotional/behavioral health. When she is not working, she likes to run and hang out with her dog, Rudy.



Allie Gibson, Ph.D., graduated from the Clinical Psychology Doctoral Program at Texas Tech University. She recently completed her internship on the clinical child track at Children's Mercy Kansas City. Her dissertation focused on investigating the impact of the Good Behavior Game on externalizing behaviors in Head Start preschoolers. She is also interested in evidence-based prevention and intervention strategies for preschoolers with disruptive behaviors and use of functional behavioral assessment to guide treatment planning. Allie is currently completing her postdoctoral fellowship at Children's Mercy specializing in behavioral pediatrics and working with children with autism and special needs. In her spare time, she loves to knit, cook, and read.



Mallory Netz, Ph.D., graduated from the Clinical & Health Psychology Program at the University of Florida. She recently completed her internship on the pediatric track at Children's Mercy Kansas City. Her dissertation focused on the role of food allergy management and caregiver distress in caregiver-provider communication. Mallory stayed at Children's Mercy to pursue a postdoctoral fellowship with emphasis in pulmonary and allergic diseases and inpatient consultation/liaison services. During virtual didactics, participants are likely to meet Mallory's four-pound dog, Rosie. Outside of the office, she enjoys watching sports.



Scott Wagoner, Ph.D., graduated from the Clinical Child Track of Auburn University's Clinical Psychology Program. His dissertation focused on evaluating the impact of a telehealth coaching intervention on disease knowledge, self-efficacy, and adherence in transition-aged youth with IBD. In addition to improving the transition to adult care and general adherence promotion efforts, he is interested in studying how interpersonal attitudes and behaviors impact illness management and adjustment. Scott is currently pursuing a fellowship in pediatric psychology with an emphasis working with gastrointestinal conditions. His clinical interests include gastroenterology, working with adolescents and young adults, and internalizing disorders. Outside of work, he enjoys yoga, traveling, and exploring local restaurants.



Dana Bakula, Ph.D., graduated from the Clinical Psychology program at Oklahoma State University. She completed her internship in Behavioral Medicine and Clinical Psychology at Cincinnati Children's Hospital Medical Center. Dana's dissertation evaluated parent psychosocial adjustment during a child's admission for inpatient rehabilitation. Her research interests include understanding psychosocial interventions that promote coping, adjustment, and physical wellbeing among children and complex medical conditions or disabilities and their families. Dana is currently completing a two-year clinical/research fellowship shared jointly with Children's Mercy and University of Kansas Medical Center. Her fellowship specializes in pediatric feeding and conducting research on feeding interventions and psychosocial functioning among parents of children with feeding difficulties. In her free time, she enjoys cooking and most recently learned how to make perogies.



Find more information about CM training at: <https://www.childrensmercy.org/professional-education/fellowships/child-psychology-training/>



Kansas City is a great place to live, with lots to do (parks, museums, jazz clubs, sports, etc), and a reasonable cost of living!

Children's Mercy Grads

Former CM interns and fellows are working across the U.S. in academic medical centers, hospitals, group and private practices, and teaching at colleges and universities.

Update on Last Year's Training Class

Our Interns from 2019-2020

Megan Carlson, PhD graduated from Virginia Commonwealth University. She accepted a postdoctoral fellowship with an emphasis in Gender Wellness and Adolescence Medicine at Nemours/Alfred I. duPont Hospital for Children in Wilmington, Delaware.

Allie Gibson, PhD graduated from Texas Tech University. Allie remains at Children's Mercy for a one-year clinical fellowship specializing in behavioral pediatrics and working with children with autism and special needs.

Mallory Netz, PhD, graduated from the University of Florida. Mallory accepted a one-year clinical fellowship at Children's Mercy with a specialty in working with children with allergies and pulmonary disease.

Our Fellows from 2019-2020

Carolyn Bates, PhD graduated from Loyola University in Chicago. She is completing her second year of a two-year clinical/research fellowship which occurs jointly with Children's Mercy and University of Kansas Medical Center. Her time is dedicated to working with populations in hematology and oncology.

Laura Hansen, PhD graduated from the University of Southern Mississippi. Upon completion of fellowship, she accepted a position at Mitchell's Place in Birmingham, Alabama, serving children with autism and developmental disabilities.

Caroline Pittard PhD graduated from the University of Louisville. She completed her internship and fellowship at Children's Mercy. She is currently serving children with autism and developmental disabilities at Park Nicollet Clinic in Minnesota.



Other D&B Trainees

In addition to psychology interns and postdoctoral fellows, our division includes seven one-year practicum students who emphasize clinical and research experiences. The trainees join us from area universities including the University of Kansas (Clinical Psychology, Clinical Child, Counseling Psychology, and Applied Behavior Analysis programs), and the University of Missouri-Kansas City (Clinical Psychology and Counseling Psychology programs). The current practicum students and experiences for the 2020 to 2021 academic year are:

Jennifer Christofferson– Pain Management
Jen Collins– RUBI/ Parent Training
Sarah Johnson– Eating Disorders
Tiffany Kichline– Pediatric Psychology
Emily Mace– Special Needs/Autism
Betsy Tampke– Behavioral Pediatrics
Amanda Williams– Neonatal Intensive Care

In addition, the Division of Developmental and Behavioral Sciences provides fellowship training in Developmental Behavioral Medicine! Our current D&B fellows are:

Rachel Goodson, DO
Whitney Rolling, DO
Michael Slogic, MD

Our psychiatry team provides training for Child Psychiatry Fellows from KU, who complete a 3-month rotation, including experience with inpatient consults and outpatient clinics.

We also host Pediatric Residents for one half-month rotations, and these residents spend time with our Psychiatrists, Developmental/Behavioral Pediatricians, and Psychologists in a variety of clinical settings.

The Child Psychology Internship at CMH

The psychology internship at Children's Mercy Kansas City provides intensive training in psychological assessment, treatment, and interdisciplinary collaboration in the context of a dedicated pediatric academic health care environment. By providing the highest-quality supervision and training, the program aims to facilitate a well-balanced set of clinical and professional skills to prepare

interns for successful careers as psychologists.

The internship is accredited by the American Psychological Association, and is a member of the Association of Psychology Postdoctoral and Internship Centers (AAPIC).

Both the Clinical Child and Pediatric Psychology tracks aim to provide interns with the following:

(A) a variety of depth and breadth of experience within a pediatric academic medical center,

(B) opportunities for interprofessional development and collaboration through integration into pediatric subspecialty clinics, and

(C) knowledge of successful integration of research into clinical practice.

Clinical Child Track

A full-year outpatient clinical child experience as well as three, 4-month long (2 days per week) specialty rotations. Interns may choose concentrated experiences in 3 out of 4 rotation options: ADHD/Behavioral Pediatrics, Eating Disorders, Feeding and Elimination, and Special Needs. Training also includes didactics and opportunity for research. The clinical child track emphasizes experiences that build skills that will prepare interns to be competitive for fellowships in clinical child psychology and for careers in academic medical centers, primary care clinics, private practice, and a variety of settings.

Pediatric Psychology Track

A full-year experience in inpatient consultation/liaison and outpatient child psychology clinic as well as three 4-month long rotations in medical specialty clinics, neuropsychology, and pain management. Training also includes didactics and opportunities for research. The pediatric psychology track emphasize experiences that build skills that will promote interns being competitive for pediatric fellowships and being successful in careers as pediatric psychologists.

See the Children's Mercy website for full descriptions of the internship and tracks!

<https://www.childrensmercy.org/professional-education/fellowships/child-psychology-training/programs/doctoral-internship-program/>

The remainder of this newsletter includes information about the psychologists who are members of our Division. Each of the faculty interact with interns. Some may be primary supervisors or mentors. Others may supervise during a major clinic rotation or "mini" medical rotation, while some provide didactics. All, though, are interested in helping trainees to have the best experience possible during their time at Children's Mercy.

Our Staff have provided this information to help you get to

know us and what Children's Mercy has to offer. These are obviously very abbreviated descriptions. You may find additional information on the CM website for all our Medical Staff.

Psychologists are organized by the primary track in which they would likely interact with interns, although some interact with interns across both tracks.

It's also worth noting that our 46 psychologists work on multi-disciplinary inpatient and outpatient teams throughout the entire hospital!



Clinical Child Specialists



Vincent J. Barone, PhD

[Associate Professor of Pediatrics](#)

[Specialties:](#) Childhood and Adolescent Behavior Disorders; School Problems; Parenting Issues; Applied Behavior Analysis; Injury Prevention Strategies



Leslee T. Belzer, PhD

[Clinical Assistant Professor of Pediatrics](#)

[Specialties:](#) Psychological services in Complex (Primary) Care for children with medical complexity, siblings and parents.



Megan Bolch, PhD

[Section Chief of Clinical Child Psychology](#)

[Clinical Assistant Professor of Pediatrics](#)

[Specialties:](#) Evaluation and treatment of ADHD, learning disorders, internalizing disorders, including anxiety and depression, behavioral



Cynthia R. Call, PsyD

[Clinical Associate Professor of Pediatrics](#)

[Specialties:](#) Assessment for Autism Spectrum Disorders, Social Development, School Problems, Affective Disorders, Childhood Trauma and Maltreatment



Melissa Campbell, PsyD

[Clinical Assistant Professor of Pediatrics](#)

[Specialties:](#) Autism Spectrum Disorders, Developmental Delays , and Behavioral Problems



Ayanda Chakawa, PhD

[Assistant Professor of Pediatrics](#)

[Specialties:](#) Child Clinical Psychology, Integrated Behavioral Health Care



Edward R. Christophersen, PhD, ABPP

[Professor of Pediatrics \(Emeritus Faculty\)](#)

[Specialties:](#) ADHD; Toileting Problems; Anxiety Disorders in Young Children; Parenting Issues



Sara R. Gould, PhD, ABPP, CEDS

[Associate Professor of Pediatrics](#)

[Specialties:](#) Eating Disorders; Adolescent Development and Mental Health



Rochelle L. Harris, PhD, ABPP

[Associate Professor of Pediatrics](#)

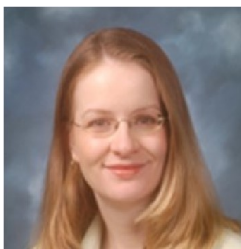
[Specialties:](#) Learning Disabilities, Attention Deficit Disorders, Adjustment and Behavioral Problems, Autism Spectrum Disorders



Girwan Khadka, PhD

[Clinical Assistant Professor of Pediatrics](#)

[Specialties:](#) Child and Adolescent Mental Health; Coordinating care with Psychiatry



Christy A. Kleinsorge, PhD

[Assistant Professor of Pediatrics](#)

[Specialties:](#) Feeding difficulties, Chronic Illness, Parenting Issues, Psychological Assessment



Katie L. Lindberg, PsyD

[Assistant Professor of Pediatrics](#)

[Specialties](#): Assessment of autism, ADHD, and developmental disabilities



Victoria C. Little, PhD

[Associate Professor of Pediatrics](#)

[Specialties](#): Evaluation of Autism Spectrum Disorder and Developmental Disorders in children age 12 months to 5 years



Simone Moody, PhD

[Clinical Assistant Professor of Pediatrics](#)

[Specialties](#): ADHD; Disruptive Behavior Disorders; Behavioral Pediatrics



Christine Moser, PsyD

[Associate Professor of Pediatrics](#)

[Specialties](#): Psychological Testing; Gender Dysphoria; Child and Adolescent Psychotherapy; Suicide Risk and Resilience in Adolescence



Cy B. Nadler, PhD

[Associate Professor of Pediatrics](#)

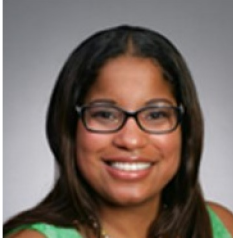
[Specialties](#): Disruptive and Severe Behavioral Problems; Behavioral Parent Training; Autism and Neurodevelopmental Disabilities Research



Darren L. Olsen, PhD

[Assistant Professor of Pediatrics](#)

[Specialties](#): Autism Spectrum Disorders, Developmental Delays, and Behavioral Parent Training



Trista Perez-Crawford, PhD

[Clinical Associate Professor of Pediatrics](#)

[Specialties:](#) ADHD; Autism; Developmental Disabilities; Behavioral Interventions and Diagnostic Assessment for Spanish Speaking and Underserved Populations



Kathryn B. Pieper, PhD

[Associate Professor of Pediatrics](#)

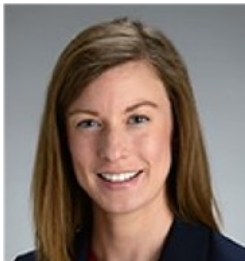
[Specialties:](#) Eating Disorders; Adolescent Psychotherapy



Kerry Prout, PhD

[Clinical Assistant Professor of Pediatrics](#)

[Specialties:](#) Behavior problems, Mood and Anxiety Disorders, Developmental Disorders,



Brenda Salley, PhD

[Assistant Professor of Pediatrics](#)

[Specialties:](#) Developmental Psychology; Cognitive Psychology; Baby Lab at KU Medical Center



Julia E. Thompson, PhD

[Assistant Professor of Pediatrics](#)

[Specialties:](#) Clinical Child Psychology; Trauma Psychology



JoAnn "Bo" Youngblood, PhD

[Assistant Professor of Pediatrics](#)

[Specialties:](#) Autism Spectrum Disorders; noncompliance, ADHD, enuresis, toilet training, tantrums, aggression, pill-swallowing

Pediatric Specialists



Sarah Beals-Erickson, PhD

Assistant Professor of Pediatrics

Specialties: Coping with chronic conditions, anxiety, depression, pain management, and insomnia



Amy R. Beck, PhD, RYT 200

Associate Professor of Pediatrics

Specialties: Pediatric Obesity, Weight Bias and Stigma, Psychological Trauma, Integration of Yoga



Mark A. Connelly, PhD

Professor of Pediatrics

Specialties: Pain Management; Somatization Disorders; Adjustment Disorders



Lynne M. Covitz, PhD, ABPP

Associate Professor of Pediatrics

Specialties: Chronic Illness with Dedicated Services to Hematology/Oncology, Psychology Training, Ethics



Amanda D. Deacy, PhD

Associate Professor of Pediatrics

Specialties: Pediatric Functional Gastrointestinal Disorders, Internalizing Disorders, and Acceptance-Based Intervention



Meredith Dreyer Gillette, PhD

Professor of Pediatrics

Specialties: Childhood Obesity; Treating Children with Special Needs (ASD, Down Syndrome, Developmental Disabilities) and Obesity; Type 2 Diabetes



Anna M. Egan, PhD, ABPP

[Professor of Pediatrics](#)

[Specialties:](#) Endocrine/Diabetes, Disorders of Sexual Development, Gender Incongruence, Adjustment to Diagnosis/ Chronic Illness, Nonadherence to Medical Treatment



Jami N. Gross-Toalson, PhD

[Associate Professor of Pediatrics](#)

[Specialties:](#) Treatment Adherence; Transition to Adult Health Care; Pediatric Cardiology and Transplant



Rebecca J. Johnson, PhD, ABPP

[Professor of Pediatrics](#)

[Specialties:](#) Kidney Dialysis and Transplant; Intestinal Rehabilitation; Cystic Fibrosis; Adherence



Maria D. Korth, PhD

[Assistant Professor of Pediatrics](#)

[Specialties:](#) Neuropsychology, Rehabilitation, Concussion Management, Traumatic Brain Injury and Stroke



Christina Low Kapalu, PhD

[Clinical Associate Professor of Pediatrics](#)

[Specialties:](#) Behavioral management of constipation and fecal incontinence; consultation with multidisciplinary clinics for chronic medication conditions, mood, anxiety, and behavioral conditions.



Michele Maddux, PhD

[Associate Professor of Pediatrics](#)

[Specialties:](#) Pediatric Inflammatory Bowel Disease; Adherence to Treatment Regimen; Transition from



Klanci M. McCabe, PhD

[Clinical Assistant Professor of Pediatrics](#)

[Specialties:](#) Inpatient Consultation/Liaison; Pain Management; Biofeedback



Janelle Mentrikoski, PhD

[Assistant Professor of Pediatrics](#)

[Specialties:](#) Inpatient Consultation/Liaison; Pain Management



Rachel M. Moore, PhD

[Assistant Professor of Pediatrics](#)

[Specialties:](#) Chronic Illness and Treatment Adherence; Pediatric Hematology/Oncology; Pediatric Nephrology (Dialysis/Kidney Transplantation)



Gail Robertson, PhD

[Assistant Professor of Pediatrics](#)

[Specialties:](#) Chronic Illness with Dedicated Services to Endocrinology, including Gender Pathways and Genetics



Jamie L. Ryan, PhD

[Assistant Professor of Pediatrics](#)

[Specialties:](#) Pediatric Liver Disease and Transplant; Adherence;



Jennifer V. Schurman, PhD, ABPP

[Professor of Pediatrics](#)

[Specialties:](#) Childhood Chronic Illness; Functional Abdominal Pain; Biopsychosocial Interactions; Pain Prevention; Volitional Nonadherence



Laura E. Slosky, PhD

[Clinical Assistant Professor of Pediatrics](#)

[Specialties:](#) Gastroenterology; Feeding Disorders; Elimination Disorders



Kevin C. Smith, PhD

[Associate Professor of Pediatrics](#)

[Specialties:](#) Pediatric Sleep Disorders



Dustin P. Wallace, PhD

[Associate Professor of Pediatrics](#)

[Specialties:](#) Pain Management; Pediatric Pain Rehabilitation; Acceptance-Based Treatment



Elizabeth J. Willen, PhD

[Clinical Assistant Professor of Pediatrics](#)

[Specialties:](#) Neuropsychological Assessment, Congenital Heart Defects, Neurocognitive Outcomes in Infants and Toddlers



Tiffany Willis, PsyD

[Assistant Professor of Pediatrics](#)

[Specialties:](#) Infant Mental Health; Attachment; Special Healthcare Needs; Minority and Underserved Populations

Adele Hall Campus: 2401 Gillham Road
Kansas City, MO 64108

Broadway Campus: 3101 Broadway Blvd.
Kansas City, MO 64111

Northland Campus: 501 N.W. Barry Road
Kansas City, MO 64155

Operation Breakthrough Campus: 3039 Troost Avenue
Kansas City, MO 64109

College Boulevard : 5520 College Blvd, Suite 425
Overland Park, KS 66211



For children. For families. For answers.

Developmental & Behavioral Health Medical Staff

D&B LEADERSHIP

Division Director

Sarah Soden, MD, FAAP

Clinical Child Section Chief

Megan Bolch, PhD

Pediatric Psychology Section

Chief

Rebecca Johnson, PhD, ABPP

Psychology Training Director

Anna Egan, PhD, ABPP

Associate Training Directors

Cynthia Call, PsyD (Fellows)

Christy Kleinsorge, PhD (Clin. Track)

Rachel Moore., PhD (Peds. Track)

Trista Perez-Crawford (Practicum)

Administrative Coordinator

Kelsey Siegel

Newsletter Editor

Cynthia Call, PsyD

Psychologists

Vincent Barone, PhD

Sarah Beals-Erickson, PhD

Amy Beck, PhD

Leslee Belzer, PhD

Megan Bolch, PhD

Cynthia Call, PsyD

Melissa Campbell, PsyD

Ayanda Chakawa, PhD

Ed Christophersen, PhD, ABPP

Mark Connelly, PhD

Lynne Covitz, PhD, ABPP

Amanda D. Deacy, PhD

Meredith Dreyer Gillette, PhD

Anna Egan, PhD, ABPP

Sara Gould, PhD, ABPP

Jami Gross-Toalson, PhD

Rochelle Harris, PhD, ABPP

Rebecca Johnson, PhD, ABPP

Girwan Khadka, PhD

Christy Kleinsorge, PhD

Maria Korth, PhD

Katie Lindberg, PsyD

Vicki Little, PhD

Christina Low Kapalu, PhD

Michele Maddux, PhD

Klanci McCabe, PhD

Janelle Mentrikoski, PhD

Simone Moody, PhD

Rachel Moore., PhD

Christine Moser, PsyD

Cy Nadler, PhD

Darren Olsen, PhD

Trista Perez- Crawford, PhD

Kathryn Pieper, PhD

Kerry Prout, PhD

Gail Robertson, PhD

Jamie Ryan, PhD

Brenda Salley, PhD

Jennifer Schurman, PhD, ABPP

Laura Slosky, PhD

Kevin Smith, PhD

Julia Thompson, PhD

Dustin P. Wallace, PhD

Elizabeth Willen, PhD

Tiffany Willis, PsyD

Bo Youngblood, PhD

Psychiatrists

Bob Batterson, MD, FAACAP,
Section Chief

Ram Chettiar, DO

Bridget Clark, DO

Catherine Madden, MD., FAACAP

Shayla Sullivant, MD, FAACAP

Lindsay Tobler, MD, FAACAP

Debra Willsie, DO, FAACAP

Developmental Pediatricians

Elizabeth Hastings, MD,
Section Chief

Hanein Edrees, M.D.

Lisa Campbell, MD, FAAP

July Jean, MD

Tarah Kruger, MD

Libby Milkovich, MD

Sarah Nyp, MD, FAAP

Sarah Soden, MD, FAAP

