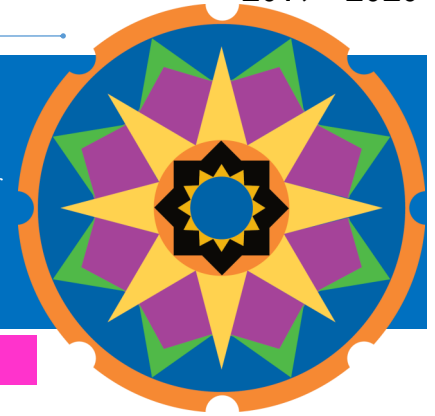


See Inside for:

- *Introduction to new psychology trainees and updates on last year's training class*
- *Description of training programs and of Kansas City*
- *Photos of our psychology group*



Introducing the Children's Mercy Training Class!

WELCOME Class of 2019-2020

Meet the Interns

Mallory Netz, MS attends the Clinical and Health Psychology program at the University of Florida. Her dissertation focuses on the role of food allergy management and caregiver distress in caregiver-provider communication. Her clinical interests include allergic and pulmonary diseases, transition, and working with adolescents and young adults. During graduate school, she coached cheerleading at the University of Florida. Outside of work, Mallory enjoys watching college football and hanging out with her dog.

Meet the Fellows

Carolyn Bates, PhD, graduated from the child and family subspecialty of the Clinical Psychology program at Loyola University Chicago. She recently completed her internship on the pediatric track at Children's Mercy. Her dissertation examined the influence of family entropy on child obesity and obesogenic behaviors. She is completing a two-year joint fellowship with Children's Mercy and the University of Kansas, specializing in hematology/oncology patients and conducting research on family adjustment to new pediatric cancer diagnoses. Her interests include running and exploring new activities and restaurants in KC!

Allie Gibson, MA comes to us from the Clinical Psychology program at Texas Tech University. Her dissertation topic examined a positive variation of the good behavior game with head start preschoolers. Research and clinical interests include exploring evidence-based treatment practices for early childhood populations with an emphasis on externalizing behaviors and autism spectrum disorder. Beyond the workplace, she loves to travel to new places, cooking (and eating) new foods, listening to audiobooks, and knitting.



Megan Carlson, MS joins us from the Child Clinical Psychology program at Virginia Commonwealth University. Her dissertation explored caregiver goals for children with and without asthma. Other research interests include parent– child/adolescent communication, integrated care, and health disparities. Her clinical interests involve pediatric psychology, and she loves working with adolescents. Megan is a newlywed, just married in April. She and her husband love to hike, camp, and share a goal to visit every national park. During the honeymoon, they checked Hawaii's Volcanoes National Park off the list!

Pictured clockwise from top left: Allie Gibson, Carolyn Bates, Caroline Pittard, Megan Carlson, Mallory Netz, and Laura Hansen.

Laura K. Hansen, PhD, graduated from the Clinical Psychology program at the University of Southern Mississippi. She completed internship at the Indiana University School of Medicine. Her dissertation focused on validation of a survey of knowledge of ASD in a sample of parents, teachers, and medical students. Research interests include autism spectrum disorder, mental health literacy, and executive functioning. Clinical interests include ASD, ADHD, and disruptive behaviors. She enjoys listening to podcasts, running and cycling, and hanging out with her cat, Jaime Lannister.

Caroline Pittard, PhD, graduated from the Counseling Psychology program at the University of Louisville and recently completed internship at Children's Mercy. Her dissertation explored the conceptualization of the positive cognitive triad and associations with depressive symptoms in adolescents. Research interests include treatment outcomes with ADHD and ASD. Clinical interests involve assessment and behavior management of children with ASD, ADHD and other neurodevelopmental disorders. Personally, she enjoys road trips, trying new restaurants, running, and spending time with her partner and two cats. She loves BBQ and watching Carolina basketball.

Find more information about CM training at: <http://www.childrensmercy.org/APA/>



Kansas City is a great place to live, with lots to do (parks, museums, jazz clubs, sports, etc), and a reasonable cost of living!

Update on Last Year's Training Class

Our Interns from 2018-2019

Carolyn Bates, PhD, graduated from Loyola University in Chicago. Upon completion of internship, she started a two-year clinical/research fellowship which occurs jointly with Children's Mercy and University of Kansas Medical Center. Her time is dedicated to working with populations in hematology/oncology.

Caroline Pittard, PhD, graduated from the University of Louisville. Caroline remains at Children's Mercy for a one-year clinical fellowship serving youth with autism spectrum disorders and other special needs. In addition, she recently accepted a clinical position at Park Nicollet in Minneapolis, Minnesota to begin at the conclusion of fellowship.

Jonathan Poquiz, PhD, graduated from the University of Kansas. He accepted a two-year clinical/research fellowship at Lurie

Children's Hospital of Chicago. The position, which was created specifically for him, focuses on youth with differences in sex development and gender dysphoria.

Our Fellows from 2018-2019

Ali Calkins-Smith, PhD, completed her internship and fellowship at Children's Mercy. We are thrilled that she stayed in the KC area providing integrated behavioral primary care services at Johnson County Pediatrics.

Ayanda Chakawa, PhD, also completed her internship and fellowship at Children's Mercy. We are delighted that she accepted a faculty position at CM focused on providing integrated behavioral health services in the Primary Care Clinic.

Other D&B Trainees

In addition to psychology interns and postdoctoral fellows, our division includes eight one-year practicum students who emphasize clinical and research experiences. The trainees join us from area universities including the University of Kansas (Clinical Psychology, Clinical Child, Counseling Psychology, and Applied Behavior Analysis programs), and the University of Missouri-Kansas City (Clinical Psychology and Counseling Psychology programs). The current practicum students and experiences for the 2019-2020 academic year are:

Erin Bojanek – Behavioral Pediatrics
Danielle Chappa – Eating Disorders Research
Jessy Guler – Neuropsychology
Tiffany Kichline – GI Research
Haley Killian – Weight Management
Arwen Marker – Eating Disorders
Walker McKinney – Special Needs/Autism
Miriam Reder – Pain Management

In addition, the Division of Developmental and Behavioral Sciences provides fellowship training in Developmental Behavioral Medicine! Our current D&B fellows are:

Rachel Goodson, DO
Whitney Rolling, DO
Michael Slogic, MD

Our psychiatry team provides training for Child Psychiatry Fellows from KU, who complete a 3-month rotation, including experience with inpatient consults and outpatient clinics.

We also host Pediatric Residents and Medical Students for one month rotations, and these residents spend time with our Psychiatrists, Developmental/Behavioral Pediatricians, and Psychologists in a variety of clinical settings.

Children's Mercy Grads

Former CM interns and fellows are working across the US in academic medical centers, hospitals, group and private practices, and teaching at colleges and universities.



The Child Psychology Internship at CMH

The psychology internship at Children's Mercy Kansas City provides intensive training in consultation, psychological assessment, treatment, and interdisciplinary collaboration in the context of a dedicated pediatric academic health care environment. By providing the highest-quality supervision and training, the program aims to facilitate a well-balanced set of clinical and professional

skills to prepare interns for successful careers as psychologists.

The internship is accredited by the American Psychological Association, and is a member of the Association of Psychology Postdoctoral and Internship Centers (AAPIC).

Both the Clinical Child and Pediatric Psychology tracks aim to provide interns with the following:

(A) a variety of depth and breadth of experience within a pediatric academic medical center,

(B) opportunities for interprofessional development and collaboration through integration into pediatric subspecialty clinics, and

(C) knowledge of successful integration of research into clinical practice.

Clinical Child Track

A full-year outpatient clinical child experience as well as three, 4-month long (2 days per week) specialty rotations. Interns may choose concentrated experiences in 3 out of 4 rotation options: ADHD/Behavioral Pediatrics, Eating Disorders, Feeding and Elimination, or Special Needs. Training also includes didactics and opportunity for research. The clinical child track emphasizes experiences that build skills that will prepare interns to be competitive for fellowships in clinical child psychology and for careers in academic medical centers, primary care clinics, private practice, and a variety of settings.

Pediatric Psychology Track

A full-year of experience in inpatient consultation/liaison and outpatient child psychology clinic as well as three 4-month long rotations in medical specialty clinics, neuropsychology, and pain management. Training also includes didactics and opportunities for research. The pediatric psychology track emphasize experiences that build skills that will promote interns being competitive for pediatric fellowships and being successful in careers as pediatric psychologists.

See website and APPIC documents for full descriptions of the internship and tracks!

<http://www.childrensmercy.org/APA/>

The remainder of this newsletter includes information about the psychologists who are members of our Division. Each of the faculty interact with interns. Some may be primary supervisors or mentors, others may supervise during a major clinic rotation or "mini" medical rotation, and others provide didactics. All, though, are interested in helping interns to have the best experience possible during their year at Children's Mercy.

Our Staff have provided this information to help you get to

know us and what Children's Mercy has to offer. These are obviously very abbreviated descriptions. You may find additional information on the CM website for all our Medical Staff.

Psychologists are organized by the primary track in which they would likely interact with interns, although some interact with interns across both tracks.

It's also worth noting that our 54 psychologists work on multi-disciplinary inpatient and outpatient teams throughout the entire hospital!



Clinical Child Specialists



Carla Allan, PhD

[Associate Professor of Pediatrics](#)

[Specialties:](#) ADHD; Disruptive Behavior Disorders; Anxiety Disorders



Timothy Apodaca, PhD

[Associate Professor of Pediatrics](#)

[Specialties:](#) Adolescent Mental Health; Substance Abuse; Mood Disorders



Vincent J. Barone, PhD

[Associate Professor of Pediatrics](#)

[Specialties:](#) Childhood and Adolescent Behavior Disorders; School Problems; Parenting Issues; Applied Behavior Analysis; Injury Prevention Strategies



Brian Belden, PhD

[Assistant Professor of Pediatrics](#)

[Specialties:](#) Attention Deficit Disorders, Parenting, Learning Disabilities, Psychological testing, Developmental Disorders



Leslee T. Belzer, PhD

[Clinical Assistant Professor of Pediatrics](#)

[Specialties:](#) Psychological services in Complex (Primary) Care for children with medical complexity, siblings and parents.



David H. Bennett, PhD

[Associate Professor of Pediatrics](#)

[Specialties:](#) Attention Deficit Disorders, Learning Disabilities, School-Related Anxieties and Difficulties, Psychological Testing



Megan Bolch, PhD

[Clinical Assistant Professor of Pediatrics](#)

[Specialties:](#) Evaluation and treatment of ADHD, learning disorders, internalizing disorders, including anxiety and depression, behavioral concerns, and adjustment disorders



Cynthia R. Call, PsyD

[Clinical Assistant Professor of Pediatrics](#)

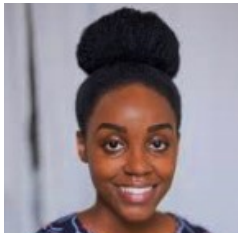
[Specialties:](#) Assessment for Autism Spectrum Disorders, Social Development, School Problems, Affective Disorders, Childhood Trauma and Maltreatment



Melissa Campbell, PsyD

[Clinical Assistant Professor of Pediatrics](#)

[Specialties:](#) Autism Spectrum Disorders, Developmental Delays , and Behavioral Problems



Ayanda Chakawa, PhD

[Assistant Professor of Pediatrics](#)

[Specialties:](#) Child Clinical Psychology, Integrated Behavioral Health Care



Edward R. Christophersen, PhD, ABPP

[Professor of Pediatrics \(Emeritus Faculty\)](#)

[Specialties:](#) ADHD; Toileting Problems; Anxiety Disorders in Young Children; Parenting Issues



Sara R. Gould, PhD, ABPP, CEDS

[Associate Professor of Pediatrics](#)

[Specialties:](#) Eating Disorders; Adolescent Development and Mental Health



Rochelle L. Harris, PhD, ABPP

[Associate Professor of Pediatrics](#)

[Specialties:](#) Learning Disabilities, Attention Deficit Disorders, Adjustment and Behavioral Problems, Autism Spectrum Disorders



Natalie M. Haultain, PsyD

[Clinical Assistant Professor of Pediatrics](#)

[Specialties:](#) Autism Spectrum Disorder; Disruptive Behavior Disorders; Anxiety Disorders



Girwan Khadka, PhD

[Clinical Assistant Professor of Pediatrics](#)

[Specialties:](#) Child and Adolescent Mental Health; Coordinating care with Psychiatry



Christy A. Kleinsorge, PhD

[Assistant Professor of Pediatrics](#)

[Specialties:](#) Chronic Illness, Parenting Issues, Psychological Testing, Feeding



Katie L. Lindberg, PsyD

[Assistant Professor of Pediatrics](#)

[Specialties:](#) Assessment of autism, ADHD, and developmental disabilities



Victoria C. Little, PhD

[Associate Professor of Pediatrics](#)

[Specialties:](#) Evaluation of Autism Spectrum Disorder and Developmental Disorders in children age 12 months to 5 years



Simone Moody, PhD

[Clinical Assistant Professor of Pediatrics](#)

[Specialties:](#) ADHD; Disruptive Behavior Disorders; Behavioral Pediatrics



Christine Moser, PsyD

[Associate Professor of Pediatrics](#)

[Specialties:](#) Psychological Testing; Gender Dysphoria; Child and Adolescent Psychotherapy; Suicide Risk and Resilience in Adolescence



Cy B. Nadler, PhD

[Associate Professor of Pediatrics](#)

[Specialties:](#) Disruptive and Severe Behavioral Problems; Behavioral Parent Training; Autism and Neurodevelopmental Disabilities Research



Darren L. Olsen, PhD

[Assistant Professor of Pediatrics](#)

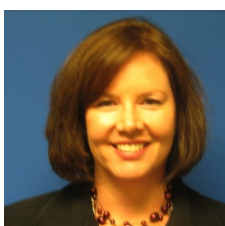
[Specialties:](#) Autism Spectrum Disorders, Developmental Delays, and Behavioral Parent Training



Trista Perez-Crawford, PhD

[Clinical Assistant Professor of Pediatrics](#)

[Specialties:](#) ADHD; Autism; Developmental Disabilities; Behavioral Interventions and Diagnostic Assessment for Spanish Speaking and Underserved Populations



Kathryn B. Pieper, PhD

[Associate Professor of Pediatrics](#)

[Specialties:](#) Eating Disorders; Adolescent Psychotherapy



Kerry Prout, PhD

Specialties: Behavior problems, Mood and Anxiety Disorders, Developmental Disorders, Adjustment Concerns, Early Childhood Concerns, Behavioral Sleep Concerns



Brenda Salley, PhD

Assistant Professor

Specialties: Developmental Psychology; Cognitive Psychology; Baby Lab at KU Med Center



Julia E. Thompson, PhD

Assistant Professor of Pediatrics

Specialties: Child Clinical Psychology; Trauma Psychology



Joanna Wiese, PhD

Clinical Assistant Professor of Pediatrics

Specialties: Eating Disorders, military psychology; anxiety and trauma-related disorders.

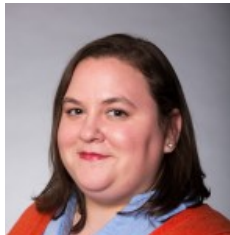


JoAnn "Bo" Youngblood, PhD

Assistant Professor of Pediatrics

Specialties: Autism Spectrum Disorders; noncompliance, ADHD, enuresis, toilet training, tantrums, aggression, pill-swallowing

Pediatric Specialists



Sarah Beals-Erickson, PhD

Assistant Professor of Pediatrics

Specialties: Pain Management; Pediatric Pain Rehabilitation; Pediatric sleep disorders



Amy R. Beck, PhD, RYT 200

Associate Professor of Pediatrics

Specialties: Pediatric Obesity, Weight Bias and Stigma, Psychological Trauma, Integration of Yoga



Mark A. Connelly, PhD

Professor of Pediatrics

Specialties: Pain Management; Somatization Disorders; Adjustment Disorders



Lynne M. Covitz, PhD, ABPP

Associate Professor of Pediatrics, Psychology Section Chief

Specialties: Chronic Illness with Dedicated Services to Hematology/Oncology, Psychology Training, Ethics



Amanda D. Deacy, PhD

Associate Professor of Pediatrics

Specialties: Pediatric Functional Gastrointestinal Disorders, Internalizing Disorders, and Acceptance-Based Intervention
Acceptance-Based Intervention



Meredith L. Dreyer Gillette, PhD

Associate Professor of Pediatrics

Specialties: Childhood Obesity; Treating Children with Special Needs (ASD, Down Syndrome, Developmental Disabilities) and Obesity; Type 2 Diabetes



Anna M. Egan, PhD, ABPP

[Associate Professor of Pediatrics](#)

[Specialties:](#) Endocrine/Diabetes, Disorders of Sexual Development, Gender Incongruence, Adjustment to Diagnosis/Chronic Illness, Nonadherence to Medical Treatment



Jami N. Gross-Toalson, PhD

[Assistant Professor of Pediatrics](#)

[Specialties:](#) Treatment Adherence; Transition to Adult Health Care; Pediatric Cardiology and Transplant



Rebecca J. Johnson, PhD, ABPP

[Associate Professor of Pediatrics](#)

[Specialties:](#) Kidney Dialysis and Transplant; Intestinal Rehabilitation; Cystic Fibrosis; Adherence



Maria D. Korth, PhD

[Assistant Professor of Pediatrics](#)

[Specialties:](#) Neuropsychology, Rehabilitation, Concussion Management, Traumatic Brain Injury and Stroke



Christina Low Kapalu, PhD

[Clinical Assistant Professor of Pediatrics](#)

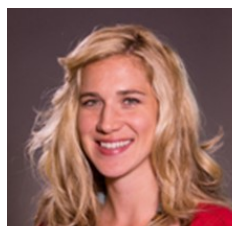
[Specialties:](#) Behavioral management of constipation and fecal incontinence; consultation with multidisciplinary clinics for chronic medication conditions, mood, anxiety, and behavioral conditions.



Michele H. Maddux, PhD

[Associate Professor of Pediatrics](#)

[Specialties:](#) Pediatric Inflammatory Bowel Disease; Adherence to Treatment Regimen; Transition from Pediatric to Adult-Focused Care



Klanci M. McCabe, PhD

[Clinical Assistant Professor of Pediatrics](#)

[Specialties:](#) Inpatient Consultation/Liaison; Pain Management; Biofeedback



Janelle Mentrikoski, PhD

[Assistant Professor of Pediatrics](#)

[Specialties:](#) Inpatient Consultation/Liaison; Pain Management



Rachel M. Moore, PhD

[Assistant Professor of Pediatrics](#)

[Specialties:](#) Chronic Illness and Treatment Adherence; Pediatric Hematology/Oncology; Pediatric Nephrology (Dialysis/Kidney Transplantation)



Gail Robertson, PhD

[Assistant Professor of Pediatrics](#)

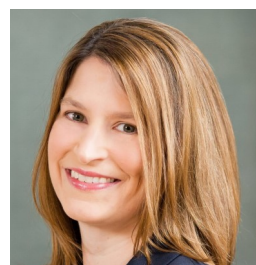
[Specialties:](#) Chronic Illness with Dedicated Services to Endocrinology, including Gender Pathways and Genetics



Jamie L. Ryan, PhD

[Assistant Professor of Pediatrics](#)

[Specialties:](#) Pediatric Liver Disease and Transplant; Adherence; Family Allocation of Treatment Responsibility; Adjustment to Pediatric Chronic Illness



Jennifer V. Schurman, PhD, ABPP

[Professor of Pediatrics](#)

[Specialties:](#) Childhood Chronic Illness; Functional Abdominal Pain; Biopsychosocial Interactions; Pain Prevention; Volitional Nonadherence



Laura E. Slosky, PhD

[Clinical Assistant Professor of Pediatrics](#)

[Specialties:](#) Gastroenterology; Feeding Disorders; Elimination Disorders



Kevin C. Smith, PhD

[Associate Professor of Pediatrics](#)

[Specialties:](#) Pediatric Sleep Disorders



Dustin P. Wallace, PhD

[Associate Professor of Pediatrics](#)

[Specialties:](#) Pain Management; Pediatric Pain Rehabilitation; Acceptance-Based Treatment



Elizabeth J. Willen, PhD

[Clinical Assistant Professor of Pediatrics](#)

[Specialties:](#) Neuropsychological Assessment, Congenital Heart Defects, Neurocognitive Outcomes in Infants and Toddlers



Tiffany Willis, PsyD

[Assistant Professor of Pediatrics](#)

[Specialties:](#) Infant Mental Health; Attachment; Special Healthcare Needs; Minority and Underserved Populations

Adele Hall Campus: 2401 Gillham Road
Kansas City, MO 64108

Broadway Campus: 3101 Broadway Blvd.
Kansas City, MO 64111

Northland Campus: 501 N.W. Barry Road
Kansas City, MO 64155

Operation Breakthrough Campus: 3039 Troost Avenue
Kansas City, MO 64109

College Boulevard : 5520 College Blvd, Suite 425
Overland Park, KS 66211



For children. For families. For answers.

Developmental & Behavioral Health Medical Staff

D&B LEADERSHIP

Division Director

Sarah Soden, MD, FAAP

Psychology Section Chief

Lynne Covitz, PhD, ABPP

Clinical Child Psychol. Lead

Megan Bolch, PhD

Pediatric Psychology Lead

Rebecca Johnson, PhD, ABPP

Psychology Training Director

Anna Egan, PhD, ABPP

Assoc. Training Directors

Cynthia Call, PsyD (Fellows)

Christy Kleinsorge, PhD (Clin track)

Maria Korth, PhD (Peds track)

Rachel Moore., PhD (Practicum)

Psychologists

Carla Allan, PhD

Tim Apodoca, PhD

Vincent Barone, PhD

Sarah Beals-Erickson, PhD

Amy Beck, PhD

Brian Belden, PhD

Leslee Belzer, PhD

Dave Bennett, PhD

Megan Bolch, PhD

Cynthia Call, PsyD

Melissa Campbell, PsyD

Ayanda Chakawa, PhD

Ed Christophersen, PhD, ABPP

Mark Connelly, PhD

Lynne Covitz, PhD, ABPP

Amanda D. Deacy, PhD

Meredith Dreyer Gillette, PhD

Anna Egan, PhD, ABPP

Sara Gould, PhD, ABPP

Jami Gross-Toalson, PhD

Rochelle Harris, PhD, ABPP

Natalie Haultain, PsyD

Rebecca Johnson, PhD, ABPP

Girwan Khadka, PhD

Christy Kleinsorge, PhD

Maria Korth, PhD

Katie Lindberg, PsyD

Vicki Little, PhD

Christina Low Kapalu, PhD

Michele Maddux, PhD

Klanci McCabe, PhD

Janelle Mentrikoski, PhD

Simone Moody, PhD

Rachel Moore., PhD

Christine Moser, PsyD

Cy Nadler, PhD

Darren Olsen, PhD

Trista Perez- Crawford, PhD

Kathryn Pieper, PhD

Kerry Prout, PhD

Gail Robertson, PhD

Jamie Ryan, PhD

Brenda Salley, PhD

Jennifer Schurman, PhD, ABPP

Laura Slosky, PhD

Kevin Smith, PhD

Julia Thompson, PhD

Dustin P. Wallace, PhD

Joanna Wiese, PhD

Elizabeth Willen, PhD

Tiffany Willis, PsyD

Bo Youngblood, PhD

Newsletter Editor

Cynthia Call, PsyD

Psychiatrists

Bob Batterson, MD, FAACAP,
Section Chief

Ram Chettiar, DO

Bridget Clark, DO

Catherine Madden, MD., FAACAP

Shayla Sullivant, MD, FAACAP

Lindsay Tobler, MD, FAACAP

Debra Willsie, DO, FAACAP

Developmental Pediatricians

Benjamin Black, MD

Lisa Campbell, MD, FAAP

Elizabeth Hastings, MD

July Jean, MD

Tarah Kruger, MD

Libby Milkovich, MD

Sarah Nyp, MD, FAAP

Sarah Soden, MD, FAAP

