

# Diabetic Ketoacidosis (DKA)

Associated Power Plans: EDP Diabetes: DKA Pathway;

PICU: PICU DKA;

Inpt: DKA - Diabetic Ketoacidosis Pathway



Children's Mercy  
KANSAS CITY

Evidence Based Practice

## Abbreviations excluding labs and radiology:

DKA = Diabetic ketoacidosis  
HHS = Hyperglycemic Hyperosmolar syndrome  
AH ED = Adele Hall Emergency Department  
POC = Point of Care      LOC = Level of consciousness  
I&O = Input & Output      NS = Normal saline  
CR = Cardiorespiratory      N/V = Nausea/Vomiting  
Pt = Patient      PICU = Pediatric Intensive Care Unit  
YR = year      CMK = Children's Mercy Kansas

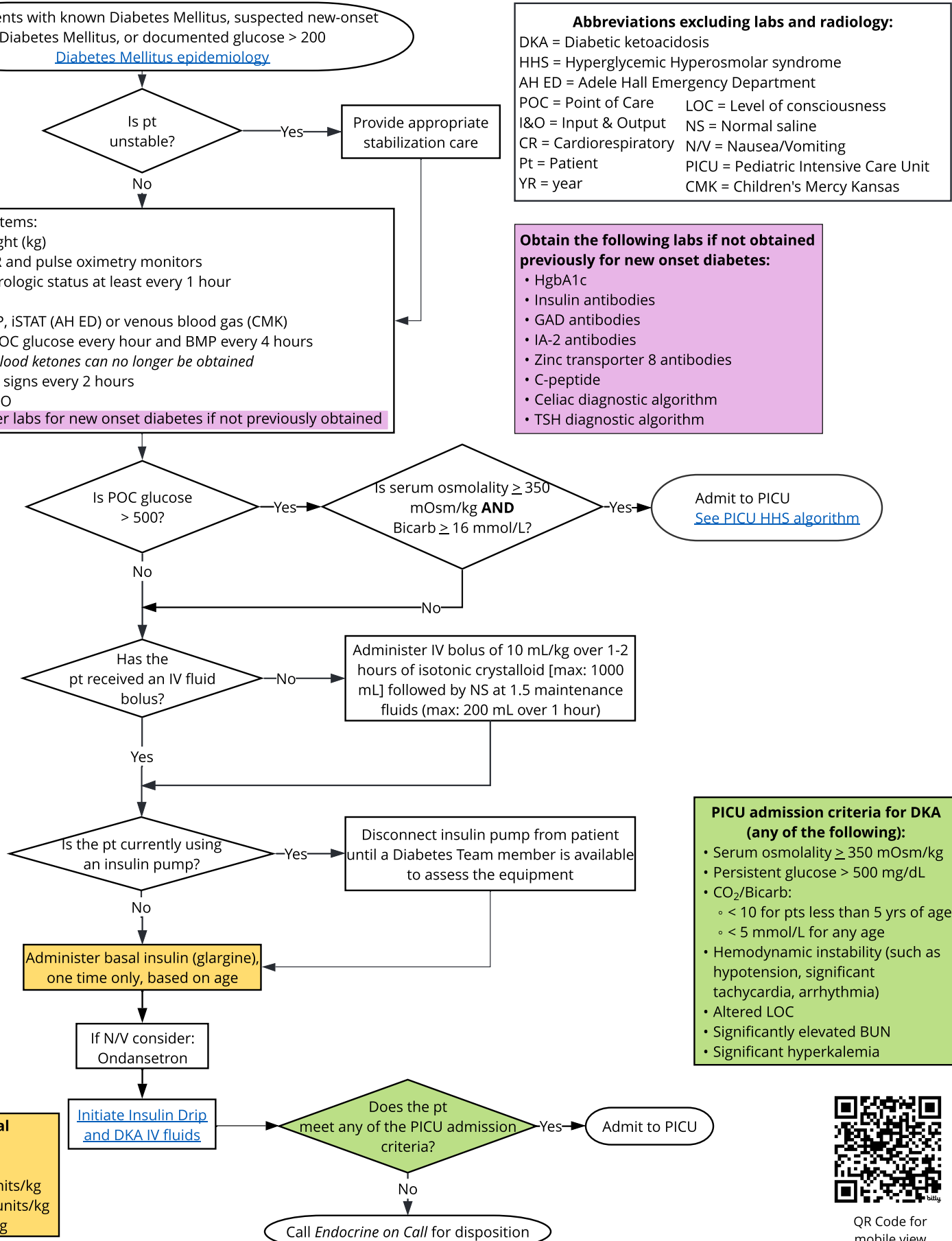
## Obtain the following labs if not obtained previously for new onset diabetes:

- HgbA1c
- Insulin antibodies
- GAD antibodies
- IA-2 antibodies
- Zinc transporter 8 antibodies
- C-peptide
- Celiac diagnostic algorithm
- TSH diagnostic algorithm

## Nursing action items:

- Obtain weight (kg)
- Place on CR and pulse oximetry monitors
- Assess neurologic status at least every 1 hour
- Place IV
- Obtain BMP, iSTAT (AH ED) or venous blood gas (CMK)
- Assess pt POC glucose every hour and BMP every 4 hours
  - \*POC blood ketones can no longer be obtained
- Assess vital signs every 2 hours
- Measure I&O
- Obtain other labs for new onset diabetes if not previously obtained

[See DKA/HHS differentiating algorithm](#)



QR Code for  
mobile view

Contact: [EvidenceBasedPractice@cmh.edu](mailto:EvidenceBasedPractice@cmh.edu)

For additional information, [link to DKA synopsis](#)

Last Updated: December 2024

This clinical pathway is meant as a guide for the healthcare provider, does not establish a standard of care, and is not a substitute for medical judgment which should be applied based upon the individual circumstances and clinical condition of the patient. Copyright © The Children's Mercy Hospital 2023. All rights reserved.