

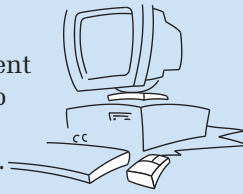
Fast Facts

Fiscal Years 2004 vs 2003

	2004	2003
Inpatient Care		
Number of Admissions	12,833	11,861
Average Length of Stay (days)	5.30	5.00
Average Daily Census	184.60	163.30
Patient Days		
Children's Mercy Hospital	63,544	56,732
Children's Mercy South	3,841	2,875
Total Patient Days	67,385	59,607
Outpatient Visits		
Hospital Clinics	144,772	136,289
CMS Specialty Center	36,480	32,249
CMN Specialty Clinics	2,288	--
Primary Care Clinics	69,810	69,336
Total Outpatient Visits	253,958	237,874
ER/Urgent Care Visits		
Emergency Room	39,703	36,349
CMH Rapid Care	21,780	21,496
CMS Urgent Care	31,546	29,952
CMN Urgent Care	7,595	--
Total ER/Urgent Care	100,624	87,797
Outreach Clinic Visits		
	2,611	2,791
Surgery Cases		
Inpatient (includes CMS)	3,838	3,463
CMH Outpatient	7,466	7,401
CMS Surgicenter	3,800	3,346
Total Surgery Cases	15,104	14,210

Online Pre-Registration

Families with Internet access may now pre-register online for outpatient and same day surgery visits at Children's Mercy. Just direct families to visit our Internet site at www.childrens-mercy.org and select Parents and Children. Then, select Pre-registration from the drop-down menu.



Physician's Update is produced monthly by Community Relations and Physician Services. For more information, contact Shawn Arni, (816) 346-1371 or e-mail to sarni@cmh.edu.

Physician's Update

September 2004

"Soooo Big!" Children's Mercy South Expansion Opens

Like a child who is excited to make a pencil mark celebrating his new height, Children's Mercy Hospitals and Clinics is proud to celebrate the opening of the new expansion at Children's Mercy South, 5808 West 110th Street in Overland Park, Kan. The hospital has tripled in size, adding 141,428 square feet of space.

As part of the expansion, two new inpatient units were added, increasing the number of inpatient beds to 54. The units are located on two separate floors. The second floor unit is currently open and a portion of the third floor unit will open later this fall.

"The additional beds will allow us to better meet patient and physician needs, especially during peak infectious disease season," says Brian Pate, MD, section chief-hospitalist, Children's Mercy Hospitals and Clinics. "Between Children's Mercy Hospital and Children's Mercy South, we are prepared to handle referrals."

Expanded, dedicated space for the Urgent Care Center is now located on the first floor of the new building. Previously, the Urgent Care Center shared the same space as the Specialty Center. The new Urgent Care Center is designed to also serve as a community pediatric emergency department in the future.

"We've seen the acuity level of our patients gradually creep higher," says Milton Fowler, MD, section chief of Urgent Care, Children's Mercy Hospitals and Clinics. "The new space is better suited to treating these patients."

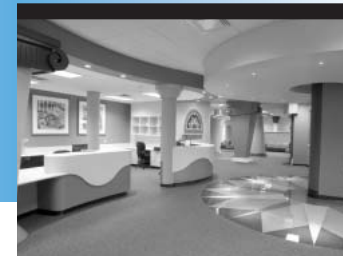
The new addition also provides additional space for the Laboratory and an expanded Radiology department which includes CT and MRI services. CT and MRI services are available 8 a.m. to 5 p.m. Monday through Friday. The Laboratory and Radiology Department are both conveniently located on the first floor of the expansion. A new lobby with a gift shop connects the original building to the new expansion.

"With the opening of the new building, we have reconfigured portions of our original building making better use of space and making it easier for patients and staff to access services," says Deb Sheppard, director of Operations.

The former inpatient unit is being renovated into 26 clinic exam rooms on the third floor of the original building. The first floor pre-op area will be expanded in the fall to prepare

for opening the fourth operating room in early 2005.

The expansion was necessitated by the growing number of children served at Children's Mercy South. Urgent Care Center visits were up 10 percent, while Surgicenter, Specialty Center, and Inpatient visits each grew by nine percent in 2003.



New Main Lobby

Children's Mercy South has tripled in size with the opening of the new expansion, which includes a new Urgent Care Center, two new inpatient units, expanded radiology and laboratory services, as well as a new main entrance.



What's Inside

2 New Docs

3 Hospitalist Update

3 Outreach Clinics

Non-Profit Org.
U.S. Postage
PAID
Kansas City, MO
Permit #301



Return Service Requested

Children's Mercy is an equal opportunity/affirmative action employer and a United Way Agency.

September 2004

New Docs

Susannah Ford, MD
Neonatology
(816) 234-3591
sford@cmh.edu



Medical Degree: University of Nebraska College of Medicine, Omaha, NE, 1998

Residency: Pediatrics, Creighton-Nebraska Universities Joint Pediatric Residency, Omaha, NE

Fellowship: Neonatology, Children's Mercy Hospitals and Clinics, Kansas City, MO

Certification: Pediatrics, 2001

Megan McDonald, DO
Radiology
(816) 234-3273
mmcdonald@cmh.edu



Medical Degree: Ohio University College of Osteopathic Medicine, Athens, OH, 1998

Residency: Diagnostic Radiology, Osteopathic Medical Center of Texas, Fort Worth, TX

Fellowship: Pediatric Radiology, Texas Children's Hospitals, Houston, TX

Certification: Diagnostic Radiology, 2003

Adam Schow, MD
Anesthesiology
(816) 234-3464
aschow@cmh.edu



Medical Degree: University of Utah School of Medicine, Salt Lake City, UT, 1999

Residency: Anesthesiology, Duke University Medical Center, Durham, NC

Fellowship: Pediatric Anesthesiology, Children's Hospital, Boston, MA

Kevin Latz, MD
Orthopaedic Surgery
(816) 234-3693



Medical Degree: University of Texas Health Science Center, San Antonio, TX, 1990

Residency: Orthopaedic Surgery, University of Kansas Medical Center, Kansas City, KS

Fellowship: Pediatric Orthopaedic Surgery, Hospital for Sick Children, Toronto, Ontario, Canada; Pediatric Sports Medicine, Children's Hospital, Harvard Medical School, Boston, MA

Certification: Orthopaedic Surgery, 1998

Vivekanand Singh, MD
Pathology and Laboratory
(816) 234-3234



Medical Degree: University of Tennessee, Graduate School of Health Sciences, Memphis, TN, 1995

Residency: Anatomic Pathology, University of Tennessee, Baptist Memorial Hospital, Memphis, TN

Fellowship: Pediatric Pathology, Children's Hospital, Columbus, OH

Certification: Pediatric Pathology, 2003; Anatomic Pathology, 1998

Kathryn Weesner, MD
Anesthesiology
(816) 234-3464
kaweesner@cmh.edu



Medical Degree: Medical College of Virginia, Richmond, VA, 1991

Residency: Anesthesiology, San Antonio Uniformed Services Health Science Consortium, Wilford Hall Medical Center, San Antonio, TX

Fellowship: Obstetric Anesthesia, Harvard Medical School, Beth Israel Deaconess Medical Center, Boston, MA

Mary Shannon Parker, MD
Adolescent Medicine
(816) 234-3050



Medical Degree: University of Texas Medical School, Houston, TX, 2000

Residency: Pediatrics, Phoenix Children's Hospital/Maricopa Medical Center, Phoenix, AZ

Certification: Pediatrics, 2003

Outreach Clinics Keep Growing

Kurt Midyett, MD, Endocrinology, joined the Children's Mercy medical staff in July, but he's already being asked to hit the road – to Hays, Manhattan and Salina. Dr. Midyett is one of 17 Children's Mercy physicians who provide outreach clinics. Children's Mercy now provides 23 outreach specialty clinics in 12 communities in Missouri and Kansas.

"As our service area continues to grow, system accessibility becomes even more important," says Joe Galeazzi, vice president, Medical Administration. "In many cases, we are the only pediatric provider of these specialties within 200 miles."

Outreach clinic specialties currently provided include cardiology, endocrinology, gastroenterology, general pediatrics, orthopaedics, renal, and hematology. An every other month orthopaedic surgery clinic is scheduled to start this month in Joplin.

Determining when and where to add an outreach clinic is a balancing act. The hospital tries to be responsive to requests from physicians and hospitals, according to Michelle McMillan, Physician Services director.

"We continue to add new specialists to our medical staff, but we can't always keep

up with the demand for their services," says McMillan. "We have to be mindful of the physicians' time and allow them to see as many patients as possible, whether that is here at Children's Mercy or at an outreach clinic."

With the addition of new clinics and locations, the number of patient visits continues to grow. During fiscal year 2004, Children's Mercy provided 2,611 outreach clinic patient visits. Gastroenterology and Endocrinology have been the most popular clinics. Gastroenterology, with three clinic locations, accounted for 910 patient visits in fiscal year 2004. The Gastroenterology Clinic in Wichita was the busiest individual clinic providing 475 visits. Endocrinology, with six outreach clinic locations, provided 760 patient visits.

"An effective outreach clinic is really a partnership between Children's Mercy and the host site," says McMillan. "It requires a combination of good location, nursing or staff support, and the availability of support services as needed."

For more information on outreach clinics, contact Michelle McMillan, (816) 234-1641 or e-mail to mmcmillan@cmh.edu.



As our service area continues to grow, system accessibility becomes even more important.

Hospitalist Update

During the past several weeks we have enjoyed the formal completion of the majority of our Children's Mercy South expansion projects. Here are some practical updates for those of you who either refer to or hospitalize patients at Children's Mercy South.

By the end of September we plan to have nearly all of our clinical expansion up and running. The Radiology department will expand to include daily radiologist coverage in addition to weekday MRI and CT scan availability and the return of fluoroscopy procedures. Later in the fall, a sedation team will be available to assure safe and effective procedures for your patients.

The addition of these procedures will allow a slight enhancement to the breadth of diagnoses appropriately managed at Children's Mercy South. However, the lack of 24-hour availability of these services and the importance of factoring patient acuity into the equation, we encourage you to discuss any questions about the appropriateness of an admission with the hospitalist or charge nurse.

This fall we will also open 10 inpatient beds on our

third floor inpatient unit to increase our maximum census to 35 inpatients. The rooms on the inpatient floors are numbered consecutively starting from beds one through 25 on the second floor followed by beds 26 through 50 on the third floor.

In order to work out any bugs before the busiest season, we will be making the transition to two floors in the middle of October. For your convenience, calls to either floor will be handled by the main nursing station on the second floor where you are accustomed to accessing the inpatient unit at (913) 696-8300.

We appreciate and look forward to continuing our successful partnership with you to provide the best possible inpatient care to the children in our area.

*Brian M. Pate, MD, FAAP
Chief, Section of Pediatric Hospitalists*

*Pat Clay, RN, BSN
Nurse Manager, Children's Mercy South Inpatient Unit*